

WAAS CH <b>61139</b> <b>W17A</b>	APP CRS <b>175°</b>	Rwy Ldg TDZE <b>1634</b> Apt Elev <b>1644</b>
--	------------------------	---

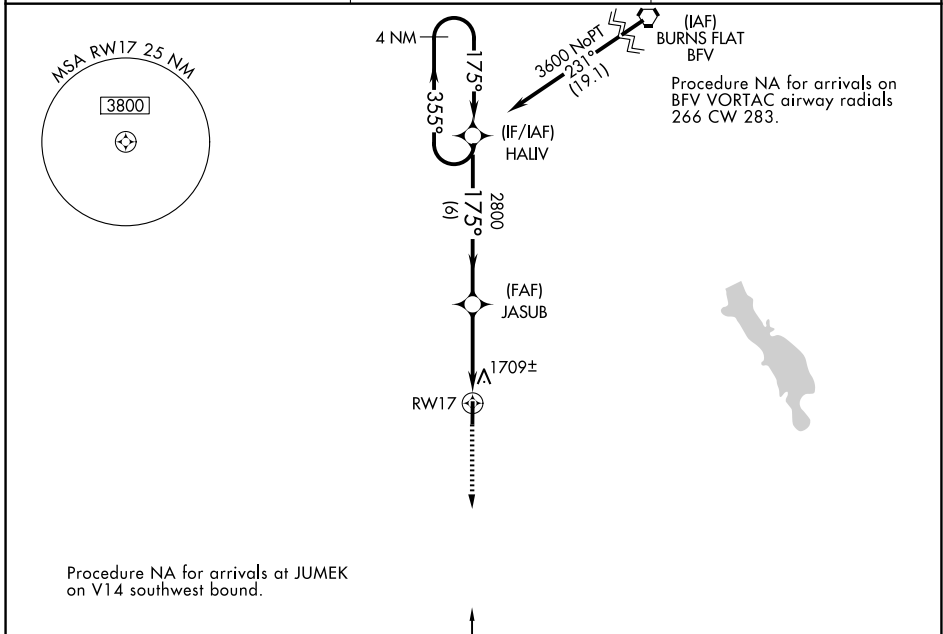
# RNAV (GPS) RWY 17

SCOTT FLD (2K4)

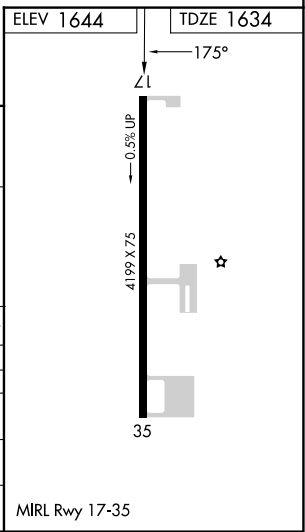
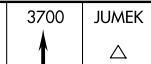
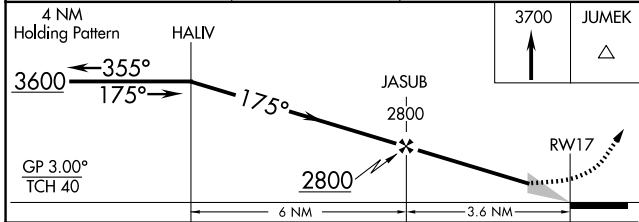
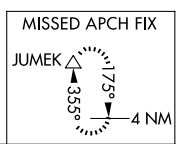
**NA** Baro-VNAV NA. DME/DME RNP-0.3 NA. Use Altus/Quartz Mountain Rgnl altimeter setting; when not received, use Hobart altimeter setting.

MISSED APPROACH: Climb to 3700 direct JUMEK and hold.

AXS AWOS-3PT <b>118.825</b>	ALTUS APP CON★ <b>125.1 353.7</b>	CTAF <b>122.9</b>
--------------------------------	--------------------------------------	----------------------



Procedure NA for arrivals at JUMEK on V14 southwest bound.



CATEGORY	A	B	C	D
LPV DA		1952-1 <sup>1</sup> / <sub>8</sub>	318 (400-1 <sup>1</sup> / <sub>8</sub> )	NA
LNAV/VNAV DA		1960-1 <sup>1</sup> / <sub>8</sub>	326 (400-1 <sup>1</sup> / <sub>8</sub> )	NA
LNAV MDA	2040-1	406 (400-1)	2040-1 <sup>1</sup> / <sub>8</sub> 406 (400-1 <sup>1</sup> / <sub>8</sub> )	NA
CIRCLING	2220-1	576 (600-1)	2340-2 696 (700-2)	NA

SC-1, 19 MAR 2026 to 16 APR 2026

SC-1, 19 MAR 2026 to 16 APR 2026