

RNAV (GPS) RWY 20

KOTLIK (2A9) (PFKO)

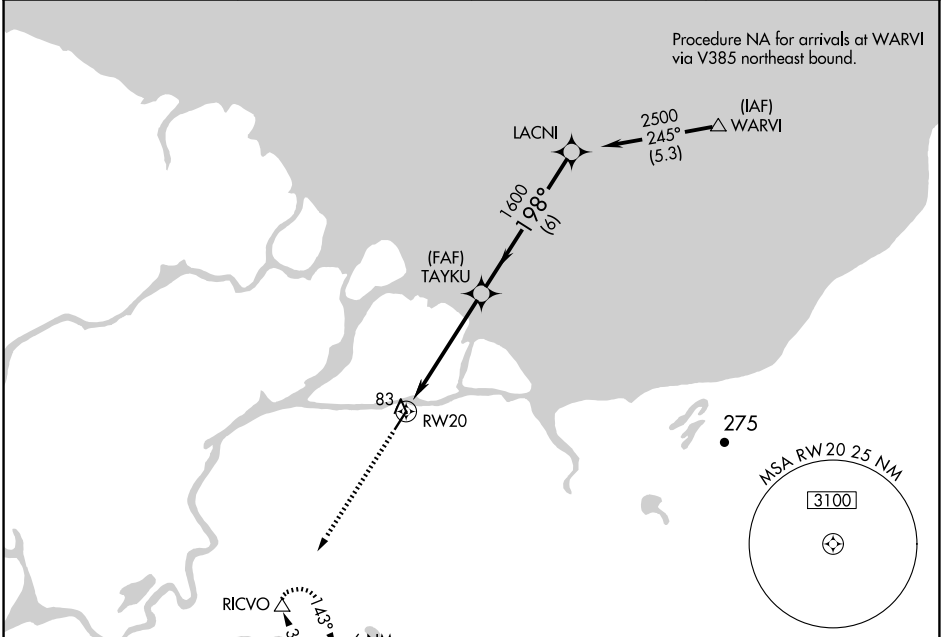
APP CRS 198°	Rwy Idg TDZE Apt Elev	4400 15 15
------------------------	-----------------------------	---------------------------------------

RNP APCH - GPS.

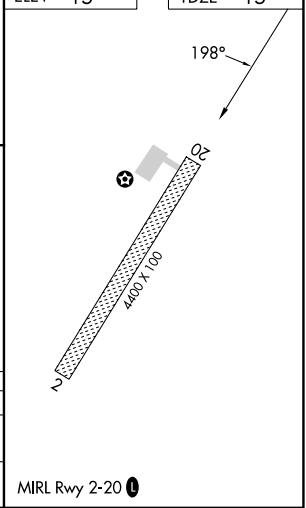
▼ When local altimeter not received use Emmonak altimeter setting. Procedure NA at night.

▲ NA MISSED APPROACH: Climb to 8000 direct RICVO WP and hold.

AWOS-3P 118.1	ENM/PAEM AWOS-3P 135.35	ANCHORAGE CENTER 124.0	CTAF 122.90
-------------------------	-----------------------------------	----------------------------------	-----------------------



ELEV 15	TDZE 15
---------	---------



8000	RICVO	LACNI
▲	△	
	TAYKU	
RW20	1600	2500
	198°	
	2.91°	
	TCH 40	
	5 NM	6 NM
		Procedure Turn NA

CATEGORY	A	B	C	D
RNAV MDA	440-1	425 (500-1)		NA
CIRCLING	480-1	465 (500-1)		NA

AK, 19 MAR 2026 to 14 MAY 2026

AK, 19 MAR 2026 to 14 MAY 2026