

LOUISVILLE, GEORGIA


AL-9837 (FAA)

26050

WAAS CH <b>90439</b> <b>W31A</b>	APP CRS <b>307°</b>	Rwy Ldg TDZE Apt Elev	<b>5002</b> <b>319</b> <b>328</b>
--	------------------------	-----------------------------	---

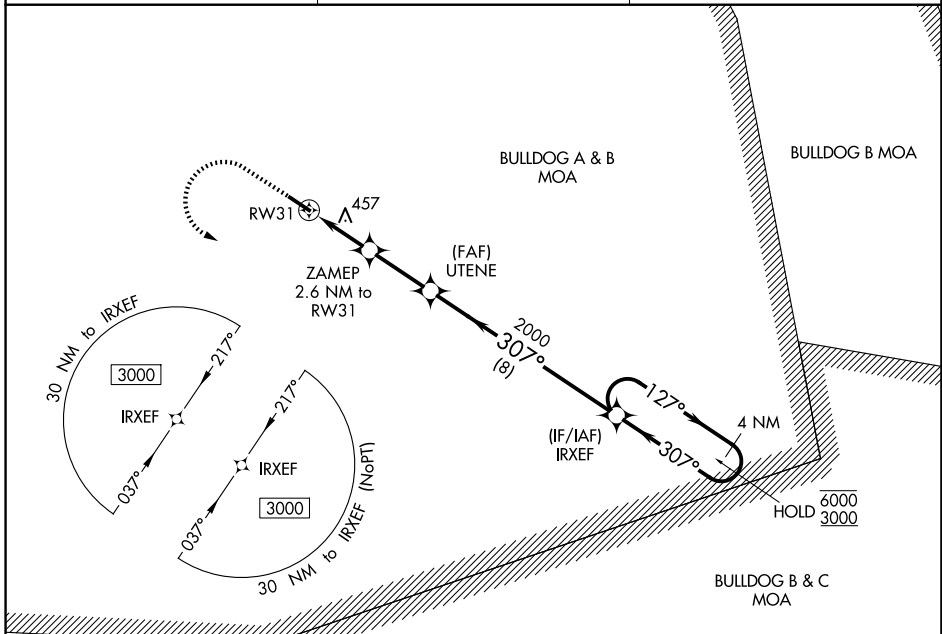
# RNAV (GPS) RWY 31

LOUISVILLE MUNI (2J3)

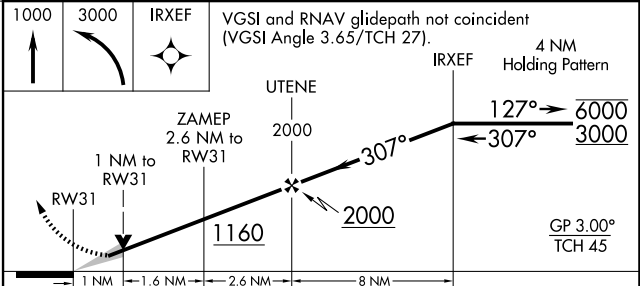
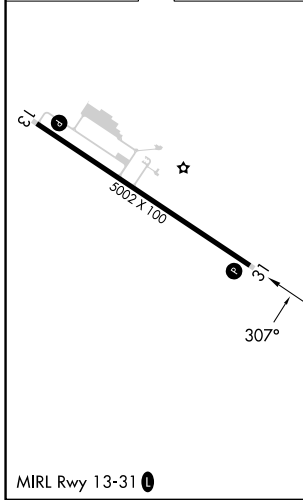
RNP APCH - GPS.  
 For uncompensated Baro-VNAV systems, LNAV/VNAV NA below -15°C or above 54°C.

MISSED APPROACH: Climb to 1000 then climbing left turn to 3000 direct IRXEF and hold.

AWOS-3PT <b>119.35</b>	AUGUSTA APP CON <b>126.8 270.3</b>	CTAF <b>122.9</b> 
---------------------------	---------------------------------------	--



ELEV 328	TDZE 319
----------	----------



CATEGORY	A	B	C	D
LPV DA	569-1		250 (300-1)	
LNAV/VNAV DA	720-1½		401 (400-1½)	
LNAV MDA	720-1	401 (400-1)	720-1½	401 (400-1½)
CIRCLING	840-1 512 (600-1)	980-1 652 (700-1)	980-1¾ 652 (700-1¾)	980-2 652 (700-2)

LOUISVILLE, GEORGIA  
 Orig-A 11AUG22

32°59'N-82°23'W

# RNAV (GPS) RWY 31

LOUISVILLE MUNI (2J3)

SE-4, 19 MAR 2026 to 16 APR 2026

SE-4, 19 MAR 2026 to 16 APR 2026