

APP CRS	Rwy Ldg	<b>3300</b>
<b>204°</b>	TDZE	<b>107</b>
	Apt Elev	<b>107</b>

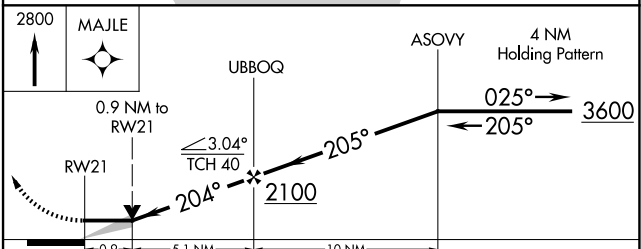
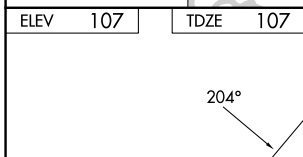
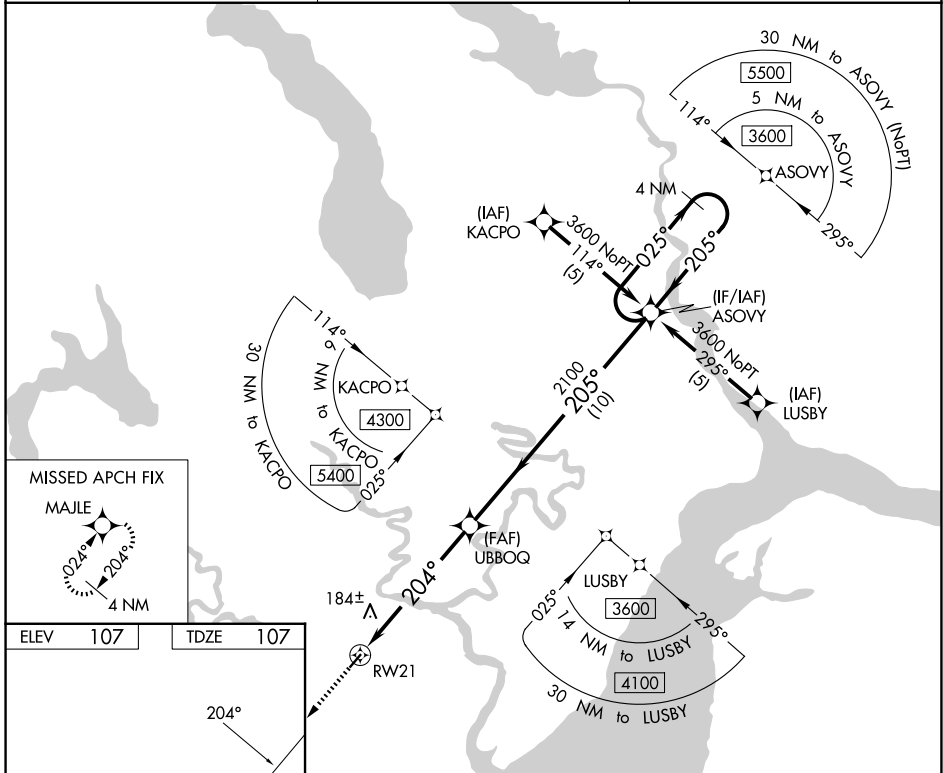
# RNAV (GPS) RWY 21

MANOKOTAK (MBA) (PAMB)

**⚠** Circling NA northwest of Rwy 3 and 21. DME/DME RNP-0.3 NA. VDP NA when using Dillingham altimeter setting. When local altimeter setting not received use Dillingham altimeter setting and increase all MDA 40 feet and increase LNAV Cat D visibility ¼ SM. Rwy 21 helicopter visibility below 1 SM NA.

**ⓘ** MISSED APPROACH: Climb to 2800 direct MAJLE and hold.

AWOS-3P <b>120.625</b>	ANCHORAGE CENTER <b>132.75 282.35</b>	CTAF <b>122.9</b> <b>ⓘ</b>
---------------------------	--	-------------------------------



CATEGORY	A	B	C	D
LNAV MDA	440-1 333 (400-1)			
CIRCLING	540-1 433 (500-1)	560-1 453 (500-1)	560-1½ 453 (500-1½)	660-2 553 (600-2)

AK, 19 MAR 2026 to 14 MAY 2026

AK, 19 MAR 2026 to 14 MAY 2026