

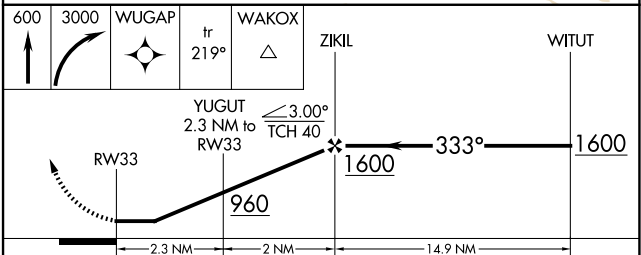
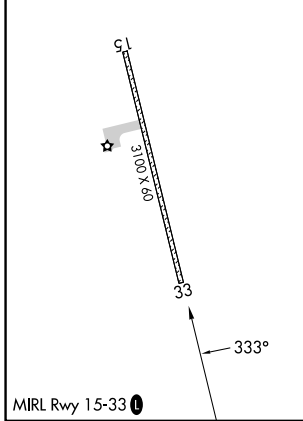
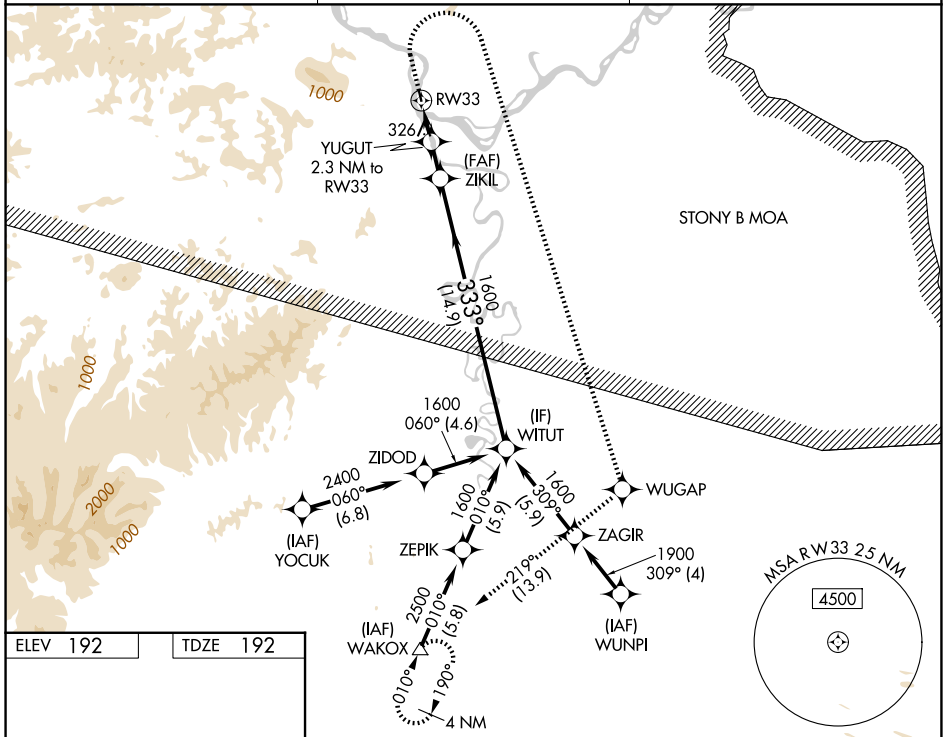
WAAS CH <b>45743</b> <b>W33A</b>	APP CRS <b>333°</b>	Rwy Ldg TDZE Apt Elev	<b>3100</b> <b>192</b> <b>192</b>
--	------------------------	-----------------------------	---

# RNAV (GPS) RWY 33

SLEETMUTE (SLQ)(PASL)

RNP APCH.	MISSED APPROACH: Climb to 600, then climbing right turn to 3000 direct WUGAP, then track 219° to WAKOX and hold.
<p>⚠ Circling NA west of Rwy 15-33. Procedure NA at night.</p> <p>⚠ Rwy 33 helicopter visibility reduction below 1 SM NA.</p> <p>⚠ -36°C</p>	

AWOS-3P <b>134.85</b>	ANCHORAGE CENTER <b>128.5 379.9</b>	UNICOM <b>122.8 (CTAF)</b>
--------------------------	--	-------------------------------



CATEGORY	A	B	C	D
LP MDA	580-1	388 (400-1)		NA
LNAV MDA	900-1	708 (800-1)		NA
CIRCLING	900-1 708 (800-1)	960-1 768 (800-1)		NA

AK, 19 MAR 2026 to 14 MAY 2026

AK, 19 MAR 2026 to 14 MAY 2026