

APP CRS	Rwy Idg	3281
137°	TDZE	371
	Apt Elev	371

RNAV (GPS) RWY 14

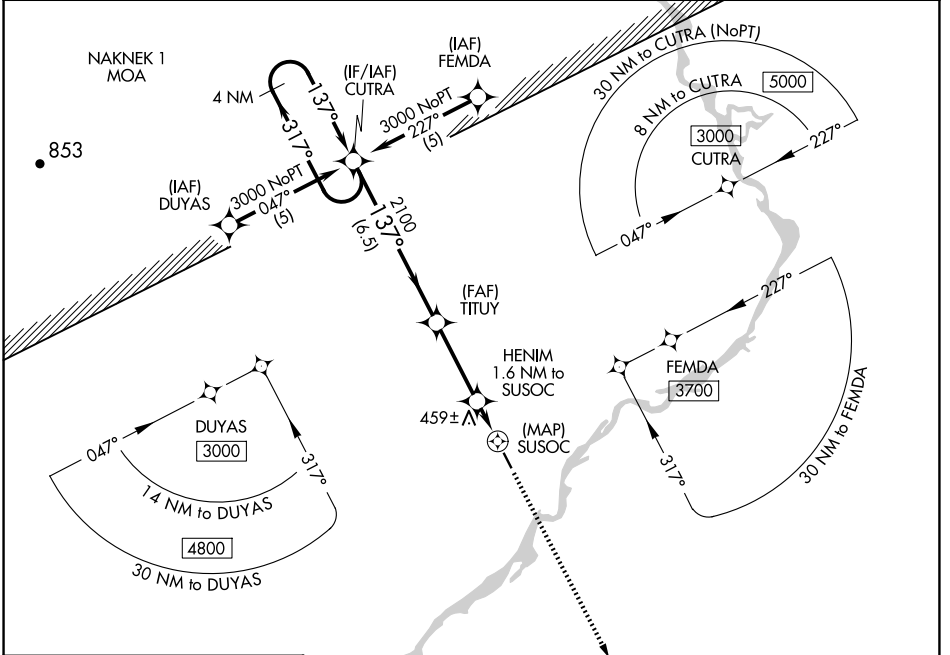
NEW STUYAHOK (KNW) (PANW)

RNP APCH - GPS.

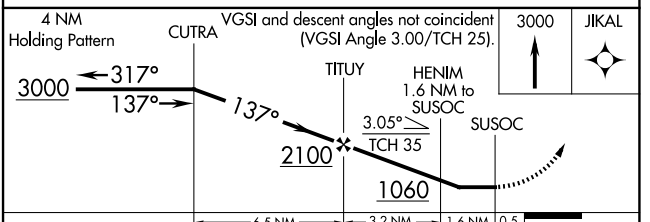
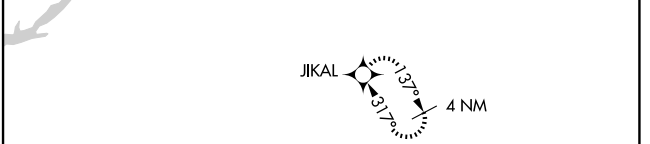
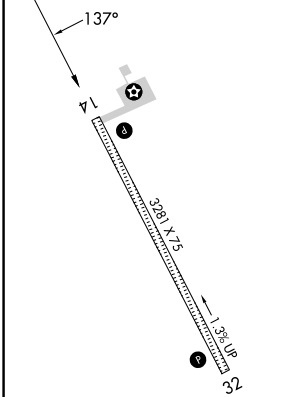
When local altimeter setting not received, use JZZ/PAJZ altimeter setting and increase all MDAs 60 feet. Procedure NA at night. Visibility reduction by helicopters NA.

MISSED APPROACH: Climb to 3000 direct JIKAL and hold.

AWOS-3P 120.275	ANCHORAGE CENTER 132.75 282.35	DILLINGHAM RADIO 122.55	CTAF 122.9
---------------------------	--	-----------------------------------	----------------------



ELEV 371	TDZE 371
----------	----------



CATEGORY	A	B	C	D
LNAV MDA	780-1	409 (500-1)	NA	
CIRCLING	780-1 409 (500-1)	840-1 469 (500-1)	NA	

AK, 19 MAR 2026 to 14 MAY 2026

AK, 19 MAR 2026 to 14 MAY 2026