

WAAS CH <b>63143</b> <b>W25A</b>	APP CRS <b>253°</b>	Rwy Ldg <b>4000</b> TDZE <b>175</b> Apt Elev <b>179</b>
--	------------------------	---

# RNAV (GPS) RWY 25

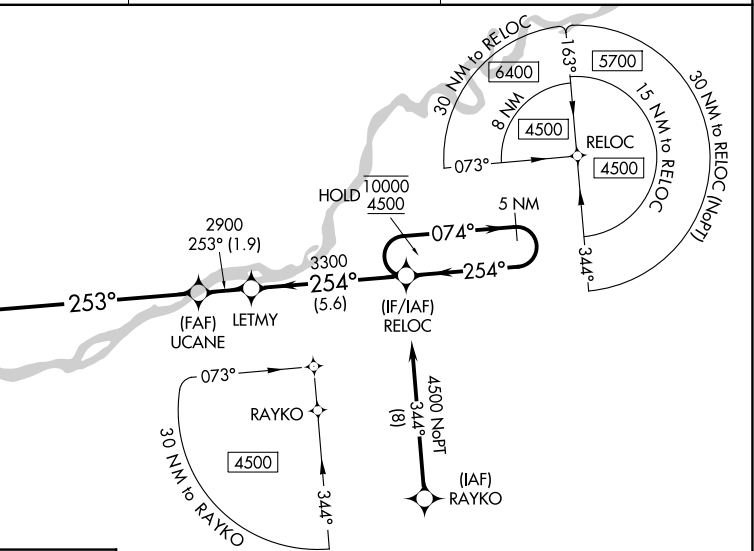
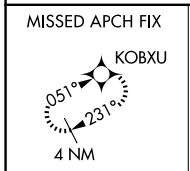
BOB BAKER MEML (IAN) (PAIK)

RNP APCH - GPS.

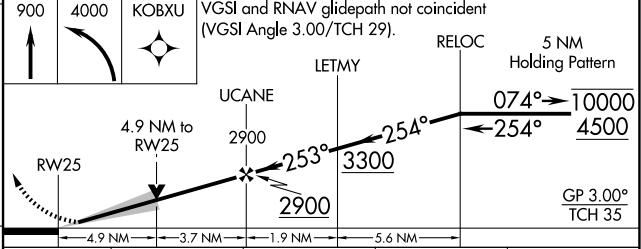
**⚠** Circling NA north of Rwy 7-25. Circling Rwy 7 NA at night. For uncompensated Baro-VNAV systems, LNAV/VNAV NA below -25°C or above 54°C. Baro-VNAV and VDP NA when using WLK/PASK altimeter setting. When local altimeter setting not received, use WLK/PASK altimeter setting and increase LPV DA\* to 531 feet; increase LPV DA to 720 feet and all visibilities ¼ SM. Increase LNAV/VNAV DA to 888 feet and all visibilities ¼ SM. Increase all MDAs 100 feet.

**MISSED APPROACH:** Climb to 900 then climbing left turn to 4000 direct KOBXU and hold, continue climb-in-hold to 4000. \*Missed approach requires minimum climb of 335 feet per NM to 1440.

AWOS-3P <b>119.025</b>	ANCHORAGE CENTER <b>119.2 263.0</b>	CTAF <b>122.7</b>
---------------------------	--	----------------------



ELEV 179	TDZE 175
----------	----------



CATEGORY	A	B	C	D
LPV DA*	450-1 275 (300-1)			
LPV DA	639-1 <sup>3</sup> / <sub>8</sub> 464 (500-1 <sup>3</sup> / <sub>8</sub> )			
LNAV/VNAV DA	807-1 <sup>3</sup> / <sub>4</sub> 632 (700-1 <sup>3</sup> / <sub>4</sub> )			
LNAV MDA	1740-1 <sup>1</sup> / <sub>4</sub> 1565 (1600-1 <sup>1</sup> / <sub>4</sub> )	1740-1 <sup>1</sup> / <sub>2</sub> 1565 (1600-1 <sup>1</sup> / <sub>2</sub> )	1740-3	1565 (1600-3)
CIRCLING	1740-1 <sup>1</sup> / <sub>4</sub> 1561 (1600-1 <sup>1</sup> / <sub>4</sub> )	1740-1 <sup>1</sup> / <sub>2</sub> 1561 (1600-1 <sup>1</sup> / <sub>2</sub> )	1740-3	1561 (1600-3)

MIRL Rwy 7-25 **Ⓛ**  
REIL Rwy 25 **Ⓛ**

AK, 19 MAR 2026 to 14 MAY 2026

AK, 19 MAR 2026 to 14 MAY 2026