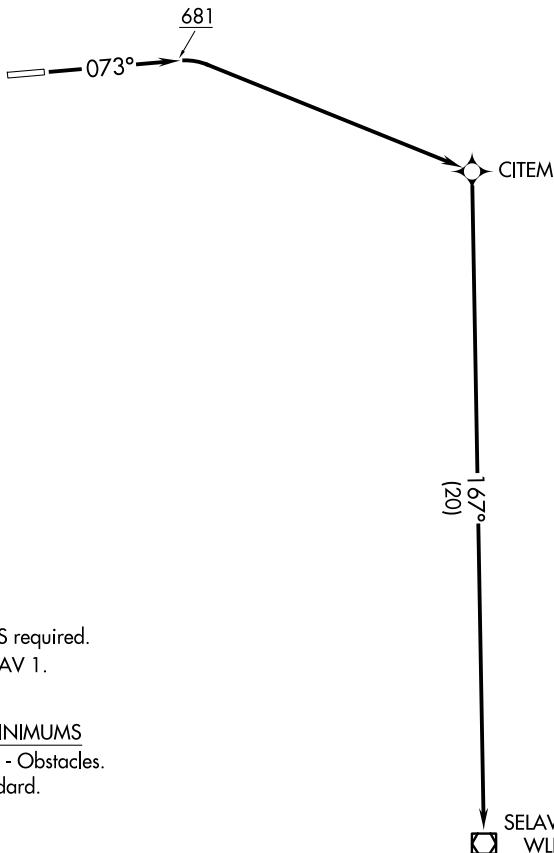


SELAWIK TWO DEPARTURE (OBSTACLE) (RNAV)

KIANA, ALASKA

AWOS-3
119.025
ANCHORAGE CENTER
119.2 263.0
CTAF
122.7



NOTE: GPS required.
NOTE: RNAV 1.

TAKEOFF MINIMUMS

Rwy 25: NA - Obstacles.
Rwy 7: Standard.

TAKEOFF OBSTACLE NOTES

Rwy 7: Trees beginning 36' from DER, 171' left of centerline, up to 23' AGL/157' MSL.
 Tree 425' from DER, 595' left of centerline, 24' AGL/161' MSL.
 Trees beginning 477' from DER, 474' left of centerline, up to 30' AGL/166' MSL.
 Tree 488' from DER, 601' left of centerline, 29' AGL/168' MSL.
 Trees beginning 552' from DER, 411' left of centerline, up to 34' AGL/169' MSL.
 Tree 581' from DER, 576' left of centerline, 31' AGL/170' MSL.
 Trees beginning 590' from DER, 434' left of centerline, up to 36' AGL/171' MSL.
 Trees beginning 601' from DER, 520' left of centerline, up to 35' AGL/172' MSL.
 Trees beginning 623' from DER, 438' left of centerline, up to 40' AGL/174' MSL.

NOTE: Chart not to scale.

DEPARTURE ROUTE DESCRIPTION

TAKEOFF RUNWAY 7: Climb on heading 073° to 681 then right turn direct CITEM, then on track 167° to WLK VOR/DME, maintain 4000.

SELAWIK TWO DEPARTURE (OBSTACLE) (RNAV)