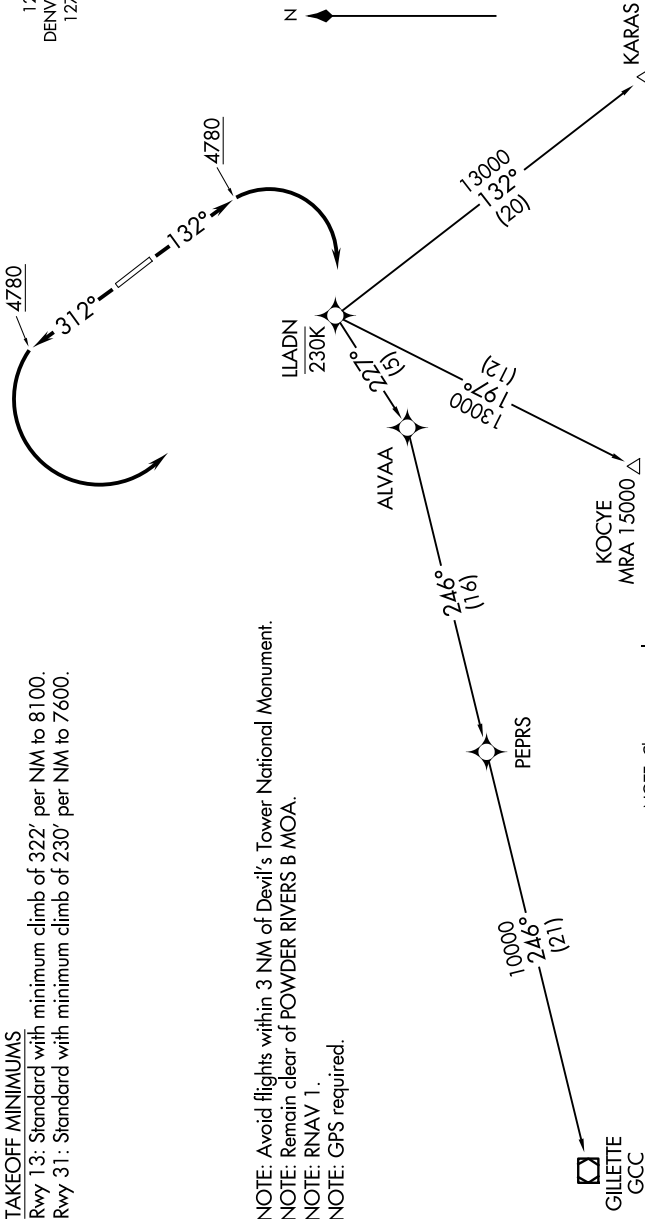
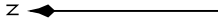


NW-1, 19 MAR 2026 to 16 APR 2026

**TAKEOFF MINIMUMS**

Rwy 13: Standard with minimum climb of 322' per NM to 8100.  
Rwy 31: Standard with minimum climb of 230' per NM to 7600.

UNICOM  
122.8 (CTAF)  
DENVER CENTER  
127.95 338.2



NOTE: Avoid flights within 3 NM of Devil's Tower National Monument.  
NOTE: Remain clear of POWDER RIVERS B MOA.  
NOTE: RNAV 1.  
NOTE: GPS required.

NOTE: Chart not to scale.

**DEPARTURE ROUTE DESCRIPTION**

**TAKEOFF RUNWAY 13:** Climb heading 132° to 4780, then right turn direct LLADN, cross LLADN at/below 230K. Thence . . . .  
**TAKEOFF RUNWAY 31:** Climb heading 312° to 4780, then left turn direct LLADN, cross LLADN at/below 230K. Thence . . . .  
. . . . Expect further clearance to filed altitude 10 minutes after departure.

**LOST COMMUNICATIONS:** Alternate frequency 135.6 / 363.025.

GILLETTE TRANSITION (LLADN1.GCC)

KARAS TRANSITION (LLADN1.KARAS)

KOCYE TRANSITION (LLADN1.KOCYE)



NW-1, 19 MAR 2026 to 16 APR 2026