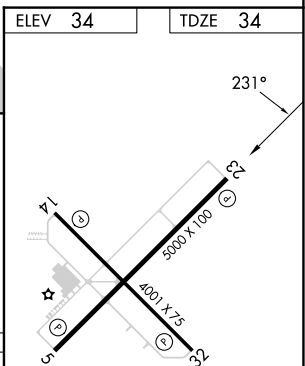
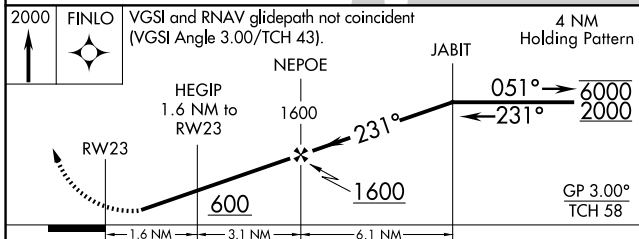
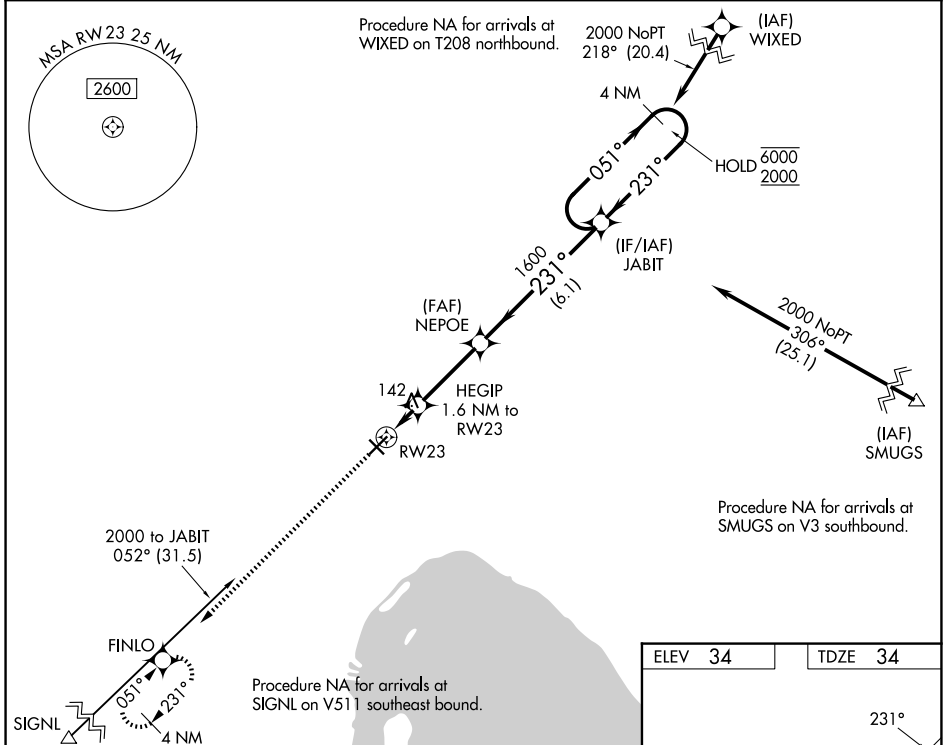


WAAS CH 58117 W23A	APP CRS 231°	Rwy Ldg TDZE 34 Apt Elev 34	5000
--	------------------------	---	-------------

RNAV (GPS) RWY 23

OKEECHOBEE COUNTY (OBE)

RNP APCH - GPS.		MISSED APPROACH: Climb to 2000 direct FINLO and hold.
<p>▲ Procedure NA at night. For uncompensated Baro-VNAV systems, LNAV/VNAV NA below -1.5°C or above 54°C. Baro-VNAV NA when using VRB altimeter setting. Rwy 23 helicopter visibility reduction below 1 SM NA.</p>		
AWOS-3 118.675	MIAMI CENTER 132.25 370.9	UNICOM 123.0 (CTAF) 0



2000	FINLO	VGSI and RNAV glidepath not coincident (VGSI Angle 3.00/TCH 43).		4 NM Holding Pattern
		HEGIP 1.6 NM to RWY 23	NEPOE 1600	JABIT 6000 2000
RWY 23		600	1600	GP 3.00° TCH 58
CATEGORY	A	B	C	D
LPV DA		320-1	286 (300-1)	
LNAV/VNAV DA		435-1 $\frac{1}{8}$	401 (500-1 $\frac{1}{8}$)	
LNAV MDA		400-1	366 (400-1)	
CIRCLING	500-1	466 (500-1)	660-1 $\frac{3}{4}$ 626 (700-1 $\frac{3}{4}$)	660-2 626 (700-2)

ELEV 34	TDZE 34
---------	---------

SE-3, 19 MAR 2026 to 16 APR 2026

SE-3, 19 MAR 2026 to 16 APR 2026