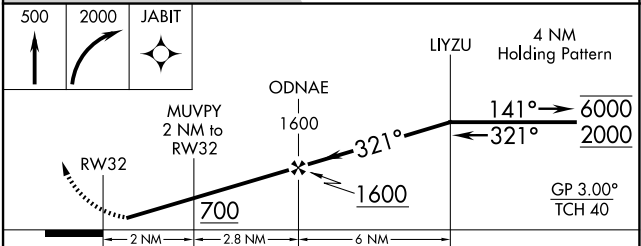
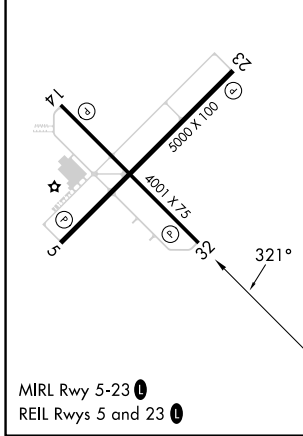
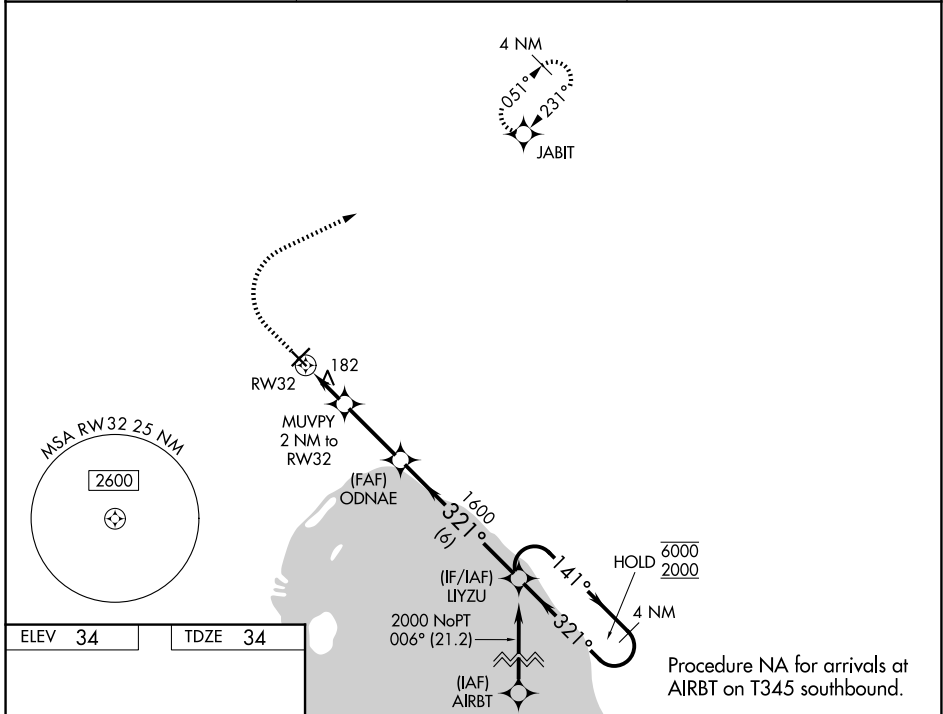


WAAS CH <b>93916</b> <b>W32A</b>	APP CRS <b>321°</b>	Rwy Ldg <b>4001</b> TDZE <b>34</b> Apt Elev <b>34</b>
--	------------------------	---

# RNAV (GPS) RWY 32

OKEECHOBEE COUNTY (OBE)

RNP APCH - GPS.		MISSED APPROACH: Climb to 500 then climbing right turn to 2000 direct JABIT and hold.
⚠ For uncompensated Baro-VNAV systems, LNAV/VNAV NA below -15°C or above 54°C. Rwy 32 helicopter visibility reduction below 1 SM NA. Procedure NA at night.		
AWOS-3 <b>118.675</b>	MIAMI CENTER <b>132.25 370.9</b>	UNICOM <b>123.0 (CTAF) 0</b>



CATEGORY	A	B	C	D
LPV DA	284-1 250 (300-1)			
LNAV/VNAV DA	440-1 1/8		406 (500-1 1/8)	
LNAV MDA	440-1	406 (500-1)	440-1 1/8	406 (500-1 1/8)
CIRCLING	500-1	466 (500-1)	660-1 3/4 626 (700-1 3/4)	660-2 626 (700-2)

SE-3, 19 MAR 2026 to 16 APR 2026

SE-3, 19 MAR 2026 to 16 APR 2026