

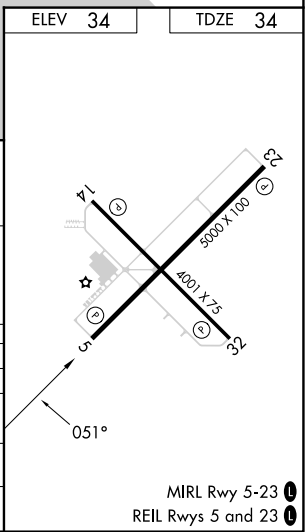
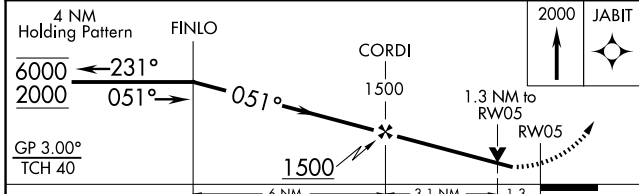
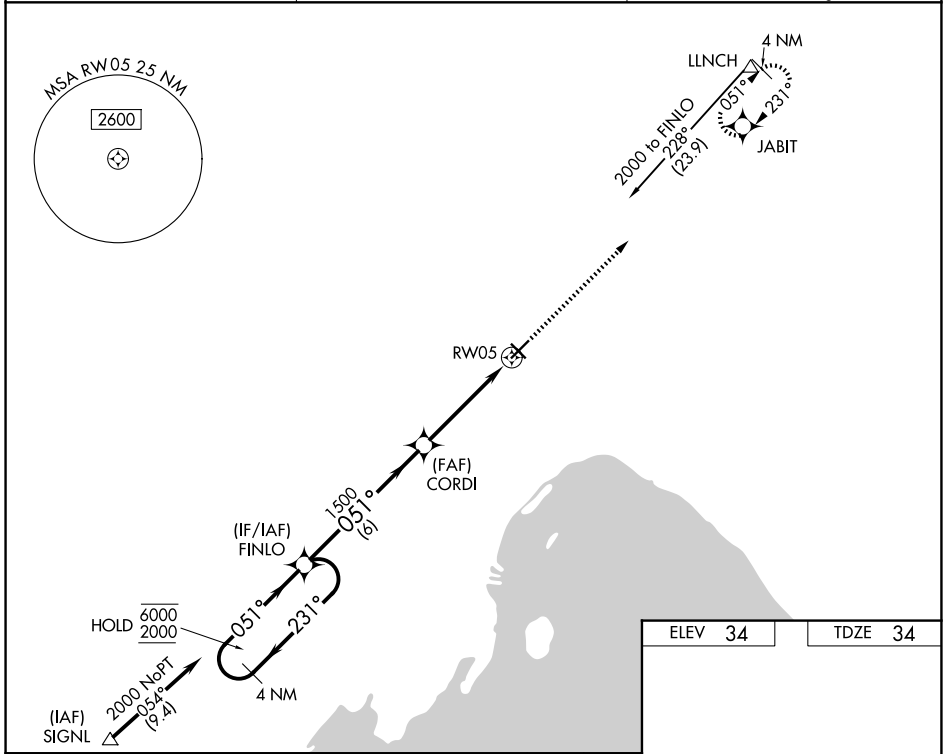
WAAS CH <b>53517</b> <b>W05A</b>	APP CRS <b>051°</b>	Rwy Ldg TDZE <b>34</b> Apt Elev <b>34</b>	<b>5000</b>
--	------------------------	---	-------------

# RNAV (GPS) RWY 5

OKEECHOBEE COUNTY (OBE)

RNP APCH - GPS.	MISSED APPROACH: Climb to 2000 direct JABIT and hold.
<p><b>⚠</b> Rwy 5 helicopter visibility reduction below <math>\frac{3}{4}</math> SM NA. Circling Rwy 14, 23, 32 NA at night. For uncompensated Baro-VNAV systems, LNAV/VNAV NA below -15°C or above 54°C.</p>	

AWOS-3 <b>118.675</b>	MIAMI CENTER <b>132.25 370.9</b>	UNICOM <b>123.0 (CTAF)</b>
--------------------------	-------------------------------------	-------------------------------



CATEGORY	A	B	C	D
LPV DA		284-1	250 (300-1)	
LNAV/VNAV DA		455-1 $\frac{1}{4}$	421 (500-1 $\frac{1}{4}$ )	
LNAV MDA	480-1	446 (500-1)	480-1 $\frac{3}{8}$	446 (500-1 $\frac{1}{8}$ )
CIRCLING	500-1	466 (500-1)	660-1 $\frac{3}{4}$ 626 (700-1 $\frac{3}{4}$ )	660-2 626 (700-2)

SE-3, 19 MAR 2026 to 16 APR 2026

SE-3, 19 MAR 2026 to 16 APR 2026