

APP CRS 244°	Rwy Ldg TDZE Apt Elev	4000 574 574
------------------------	-----------------------------	---

RNAV (GPS) RWY 22

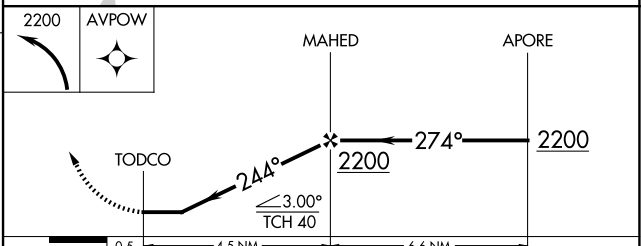
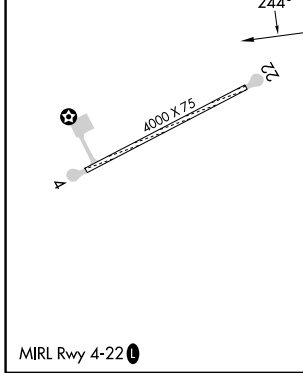
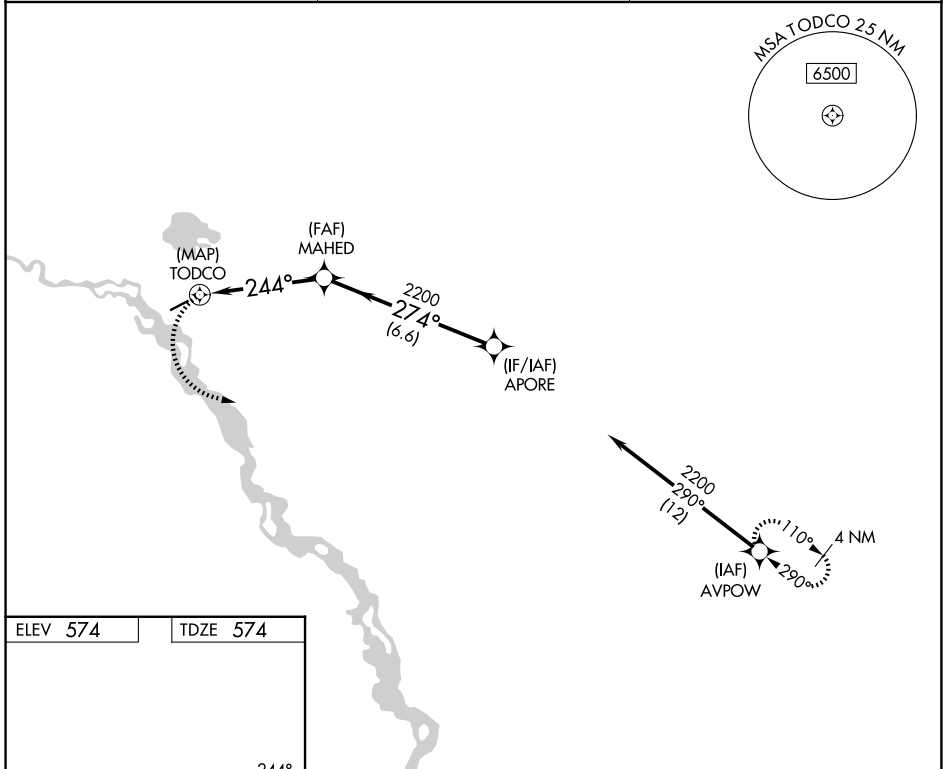
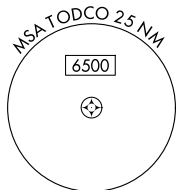
VENETIE (VEE) (PAVE)

RNP APCH-GPS.

NA Rwy 22 helicopter visibility reduction below 1 SM NA. Use Fort Yukon altimeter setting. Procedure NA at night.

MISSED APPROACH: Climbing left turn to 2200, direct AVPOW and hold.

FYU/PFYU AWOS-3P 125.8	ANCHORAGE CENTER 135.0 225.4	CTAF 122.9
----------------------------------	--	----------------------



CATEGORY	A	B	C	D
LNAV MDA	1160-1	586 (600-1)	1160-1¾	586 (600-1¾)
CIRCLING	1180-1	606 (700-1)	1180-1¾ 606 (700-1¾)	1260-2¼ 686 (700-2¼)

AK, 19 MAR 2026 to 14 MAY 2026

AK, 19 MAR 2026 to 14 MAY 2026