

APP CRS	Rwy Ldg	4000
029°	TDZE	572
	Apt Elev	574

RNAV (GPS) RWY 4

VENETIE (VEE) (PAVE)

RNP APCH-GPS.

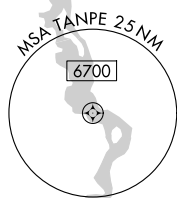
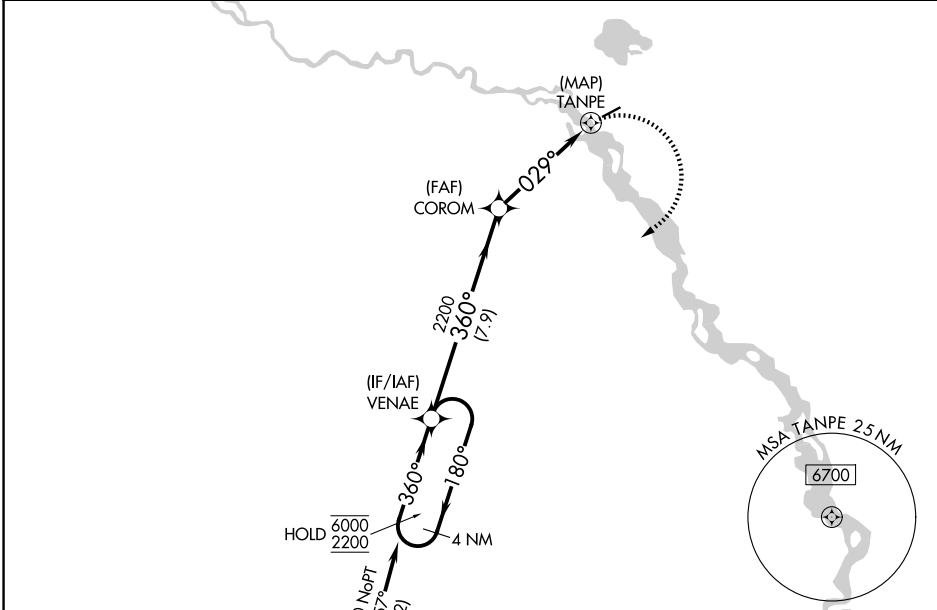
NA Rwy 4 helicopter visibility reduction below 1 SM NA.
Use Fort Yukon altimeter setting. Procedure NA at night.

MISSED APPROACH: Climbing right turn to 2200, direct VENAE and hold.

FYU/PFYU AWOS-3P
125.8

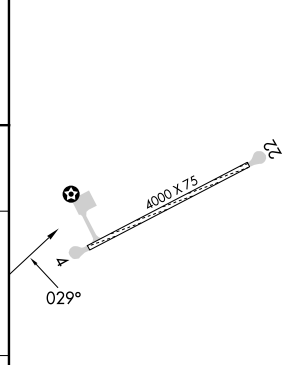
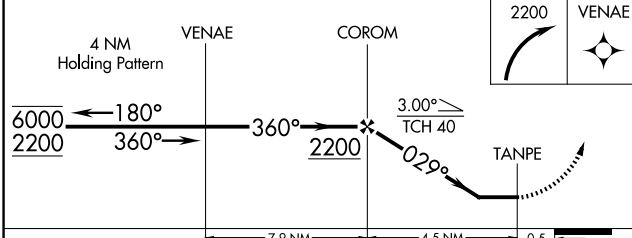
ANCHORAGE CENTER
135.0 225.4

CTAF
122.9



Procedure NA for arrivals at CURUP on airways B4 westbound and T273 southbound.

ELEV 574	TDZE 572
----------	----------



CATEGORY	A	B	C	D
LNVA MDA	1220-1	648 (700-1)	1220-1 $\frac{7}{8}$	648 (700-1 $\frac{7}{8}$)
CIRCLING	1220-1	646 (700-1)	1220-1 $\frac{7}{8}$	1260-2 $\frac{1}{4}$
			646 (700-1 $\frac{7}{8}$)	686 (700-2 $\frac{1}{4}$)

MIRL Rwy 4-22

AK, 19 MAR 2026 to 14 MAY 2026

AK, 19 MAR 2026 to 14 MAY 2026