

APP CRS 249°	Rwy Ldg TDZE Apt Elev	3050 1755 1755
------------------------	-----------------------------	-------------------------------------------

RNAV (GPS) RWY 26

PHILIPPI/BARBOUR COUNTY RGNL (79D)

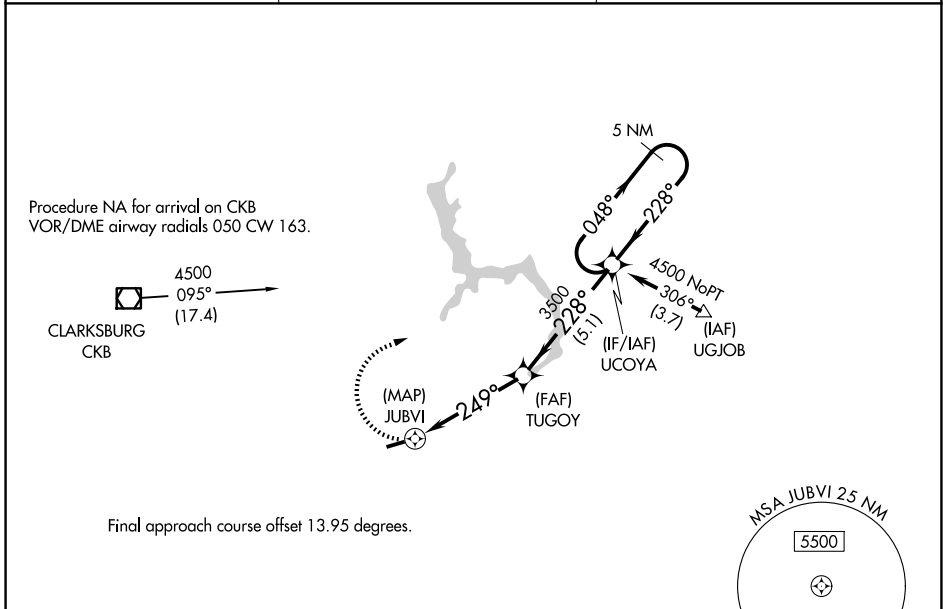
▼ Rwy 26 helicopter visibility reduction below 1 SM NA.
DME/DME RNP-0.3 NA. Procedure NA at night.
▲ NA Use Clarksburg altimeter setting, when not received,
use Buckhannon altimeter setting.

MISSED APPROACH: Climbing right
turn to 4500 direct UCOYA and hold.

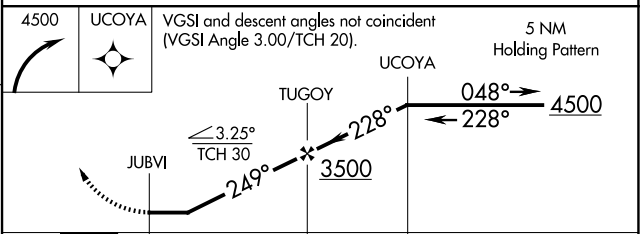
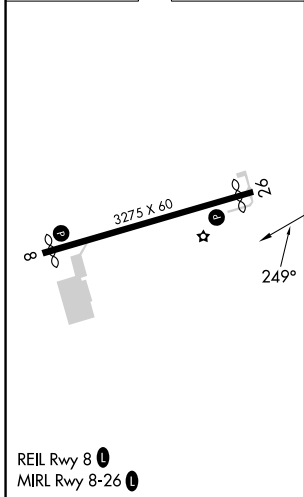
CKB ASOS
127.825

CLARKSBURG APP CON ★
121.15 284.65

CTAF
122.9



ELEV 1755 TDZE 1755



CATEGORY	A	B	C	D
LNAV MDA	2460-1	705 (800-1)	NA	
CIRCLING	2520-1 765 (800-1)	2520-1¼ 765 (800-1¼)	NA	