

LOC/DME I-BBG 111.35 Chan 50(Y)	APP CRS 323°	Rwy Ldg 7140 TDZE 1302 Apt Elev 1302
--	------------------------	--

ILS or LOC RWY 32

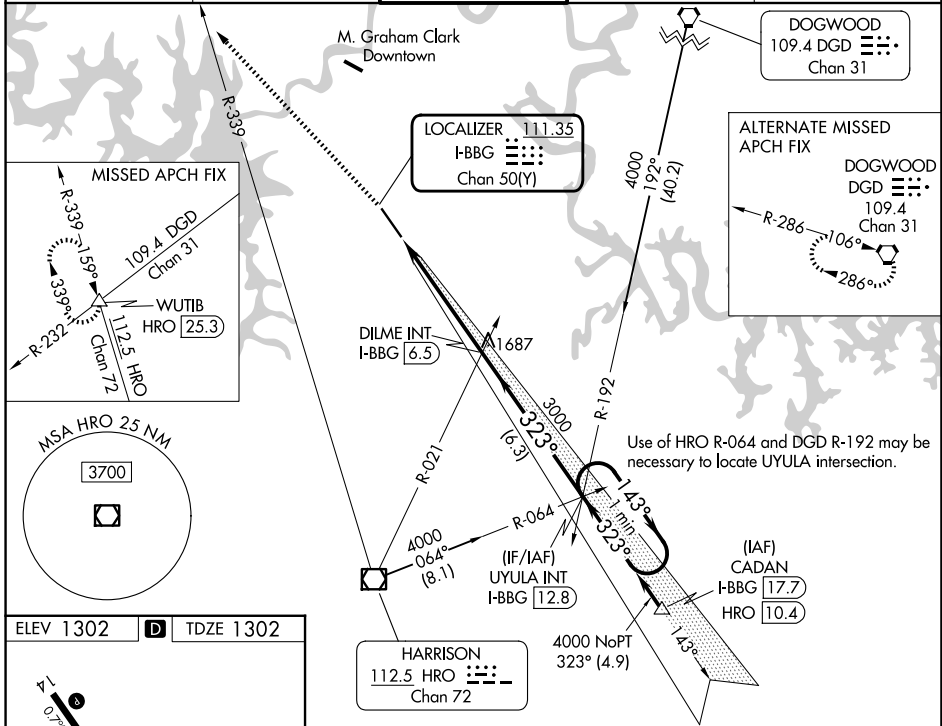
BRANSON (BBG)

NA Inop table does not apply. When local altimeter setting not received, use Harrison altimeter setting and increase S-ILS 32 DA to 1549 feet; increase all MDAs 60 feet and S-LOC 32 visibility Cat C/D and Circling visibility Cat C ¼ SM. VDP NA when using Harrison altimeter setting.

MALSF

MISSED APPROACH: Climb to 4000 on heading 315° and HRO VOR/DME R-339 to WUTIB INT/HRO 25.3 DME and hold.

ATIS 124.625	SPRINGFIELD APP CON 126.35	BRANSON TOWER* 128.15 (CTAF) 0	GND CON 118.4	UNICOM 122.95
-------------------------------	---	--	--------------------------------	--------------------------------



NC-3, 19 MAR 2026 to 16 APR 2026

NC-3, 19 MAR 2026 to 16 APR 2026

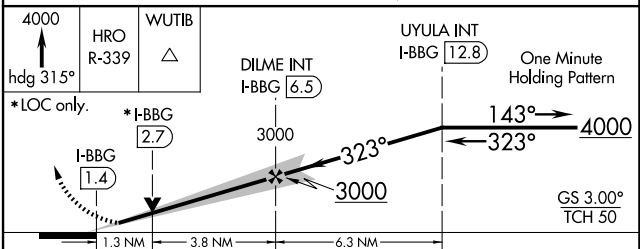
ELEV 1302	D	TDZE 1302
-----------	----------	-----------

TWR ☆

REIL Rwy 14 **0**
HIRL Rwy 14-32 **0**

FAF to MAP 5.1 NM

Knots	60	90	120	150	180
Min:Sec	5:06	3:24	2:33	2:02	1:42



CATEGORY	A	B	C	D
S-ILS 32		1502-1	200 (200-1)	
S-LOC 32		1760-1	458 (500-1)	
CIRCLING	1760-1 458 (500-1)	1900-1 598 (600-1)	2220-2¾ 918 (1000-2¾)	2220-3 918 (1000-3)