

| | | |
|-------------|----------|-------------|
| APP CRS | Rwy Ldg | 3500 |
| 088° | TDZE | 916 |
| | Apt Elev | 916 |

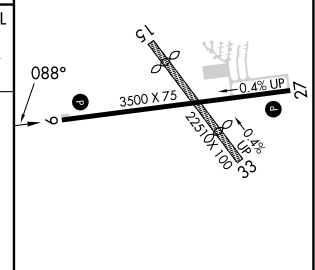
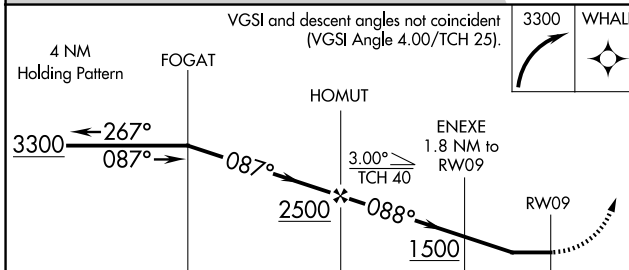
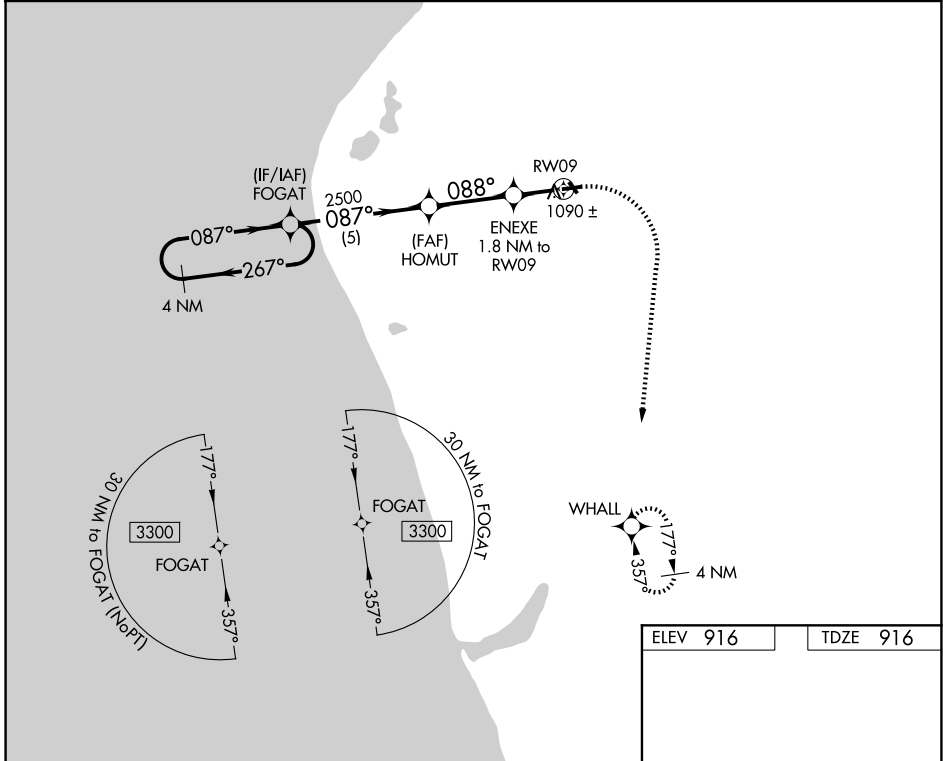
RNAV (GPS) RWY 9

OCEANA COUNTY (C04)

⚠ NA When local altimeter setting not received, use Fremont altimeter setting and increase all MDAs 80 feet. DME/DME RNP-0.3 NA. Procedure NA at night. Helicopter visibility reduction below 1 SM NA. Circling NA to Rwy 15 and 33.

MISSED APPROACH: Climbing right turn to 3300 direct WHALL and hold.

| | | |
|--------------------------------|--|--|
| AWOS-AV 122.7 | GREAT LAKES APP CON* 119.8 290.35 | UNICOM 122.7 (CTAF) 0 |
|--------------------------------|--|--|



| | | | | |
|----------|-----------------------|-------------------------|----|----|
| CATEGORY | A | B | C | D |
| LNAV MDA | 1340-1 | 424 (500-1) | NA | NA |
| CIRCLING | 1540-1 624 (700-1) | 1780-1¼ 864 (900-1¼) | NA | NA |

MIRL Rwy 09-27 0

EC-1, 19 MAR 2026 to 16 APR 2026

EC-1, 19 MAR 2026 to 16 APR 2026