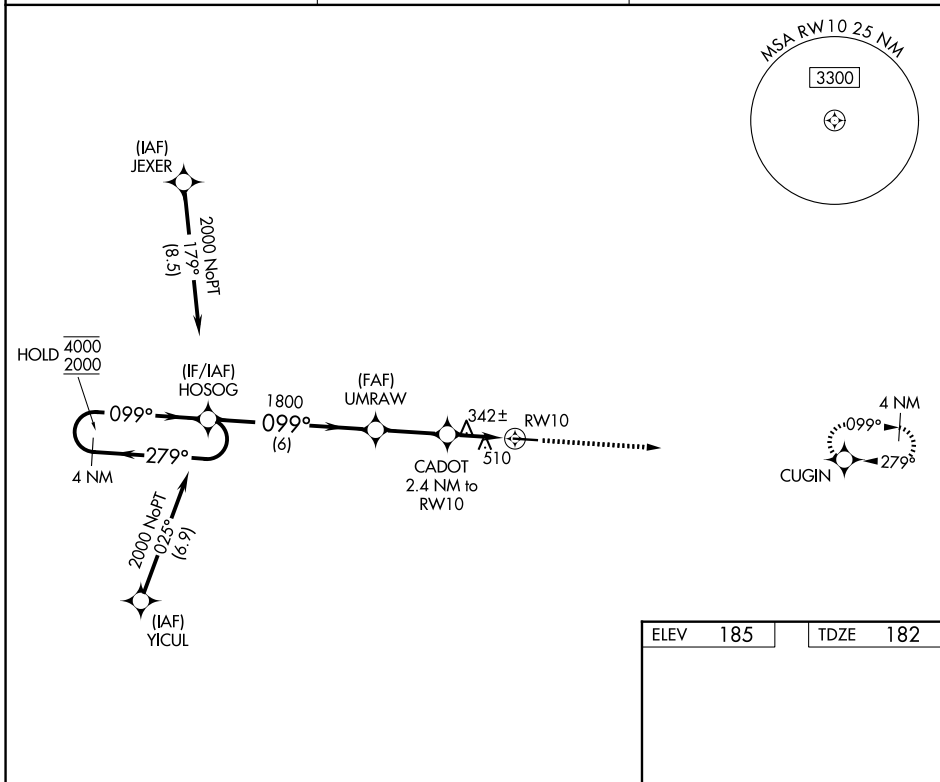


WAAS CH 42734 W10A	APP CRS 099°	Rwy Ldg TDZE Apt Elev	4760 182 185
--	------------------------	-----------------------------	---

RNAV (GPS) RWY 10

QUITMAN BROOKS COUNTY (4J5)

RNP APCH - GPS.		MISSED APPROACH: Climb to 2000 direct CUGIN and hold.
<p>▽ Rwy 10 helicopter visibility reduction below 1 SM NA. Procedure NA at night. Use VLD altimeter setting; when not received, use TVI altimeter setting and increase all MDAs 20 feet and LNAV Cat C visibility 1/8 SM.</p> <p>△ NA</p>		
VLD ASOS 126.225	VALDOSTA APP CON★ 126.6	CTAF 122.9 0



SE-4, 19 MAR 2026 to 16 APR 2026

SE-4, 19 MAR 2026 to 16 APR 2026

4 NM Holding Pattern		Visual Segment - Obstacles.		2000	CUGIN
				099°	
CATEGORY	A	B	C	D	
LP MDA	640-1	458 (500-1)	640-1 ³ / ₈ 458 (500-1 ³ / ₈)	NA	
LNAV MDA	820-1	638 (700-1)	820-1 ³ / ₄ 638 (700-1 ³ / ₄)	NA	
MIRL Rwy 10-28 0					