

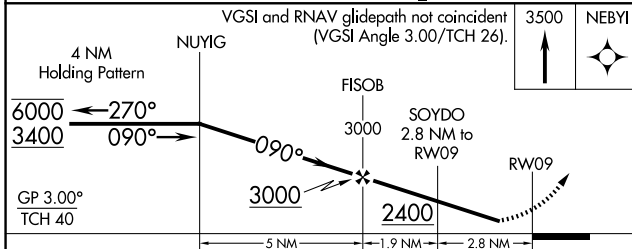
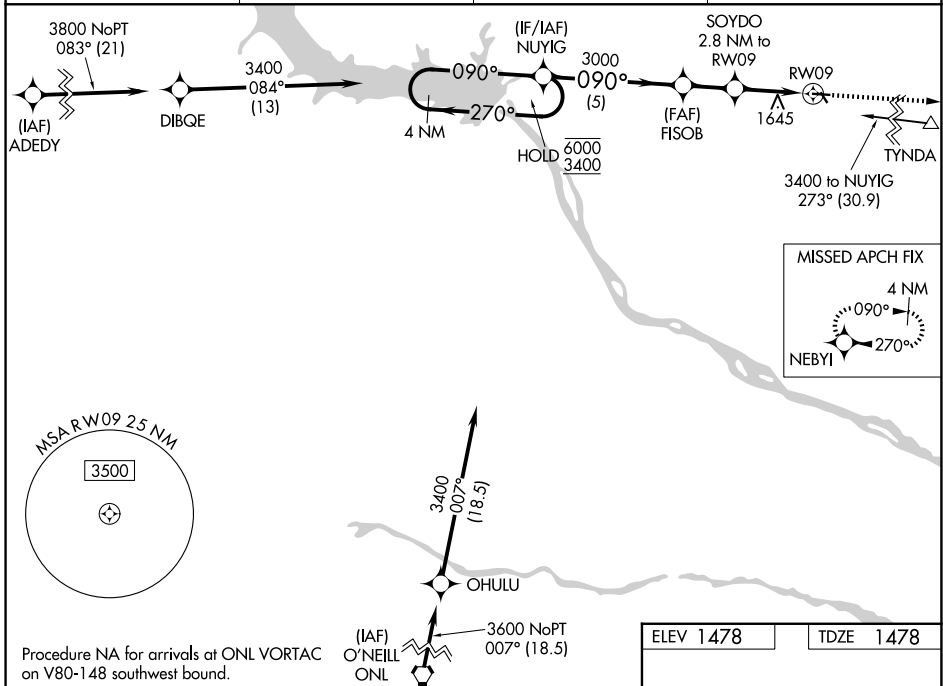
WAAS CH <b>53334</b> <b>W09A</b>	APP CRS <b>090°</b>	Rwy Ldg TDZE Apt Elev	<b>3500</b> <b>1478</b> <b>1478</b>
--	------------------------	-----------------------------	---

# RNAV (GPS) RWY 9

WAGNER MUNI (AGZ)

RNP APCH - GPS.	<p><b>NA</b> Circling NA to Rwys 14 and 32. Baro-VNAV NA. Rwy 9 helicopter visibility reduction below ¼ SM NA. Use Yankton altimeter setting; when not received use O'Neill altimeter setting and increase all DAs 51 feet, all MDAs 60 feet and increase LPV all Cats visibility ⅓ SM, and LNAV/VNAV all Cats visibility ⅓ SM.</p>	<p>MISSED APPROACH: Climb to 3500 direct NEBY1 and hold.</p>

AWOS-3P <b>128.325</b>	YKN AWOS-3PT <b>119.05</b>	MINNEAPOLIS CENTER <b>128.0 257.95</b>	AUNICOM <b>122.8 (CTAF)</b> <b>0</b>
---------------------------	-------------------------------	---	---



ELEV 1478	TDZE 1478
MRL Rwy 9-27 <b>0</b>	

CATEGORY	A	B	C	D
LPV DA	1847-1	369 (400-1)		NA
LNAV/VNAV DA	2053-1½	575 (600-1½)		NA
LNAV MDA	2020-1	542 (600-1)		NA
CIRCLING	2080-1	602 (700-1)		NA

NC-1, 19 MAR 2026 to 16 APR 2026

NC-1, 19 MAR 2026 to 16 APR 2026