

APP CRS
257°

Rwy Idg **5001**
TDZE **1883**
Apt Elev **1883**

RNAV (GPS) RWY 26

SOUTHERN WEST VIRGINIA RGNL (E,B,D)

RNP APCH - GPS.

▼ Obtain local altimeter setting on CTAF; when not received, use Beckley altimeter setting: increase all MDAs 140 feet and visibility LNAV Cat A and Circling Cat A/B ¼ SM and Circling Cat C ½ SM.

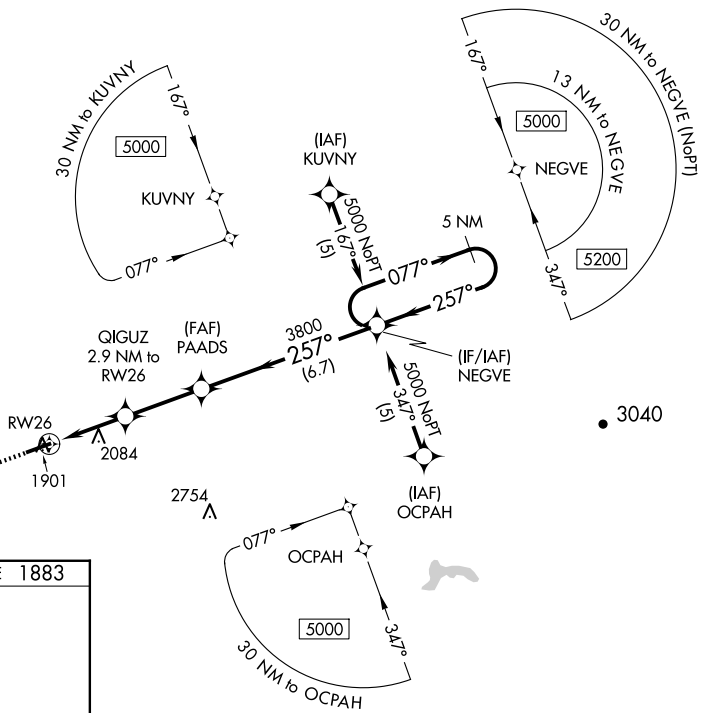
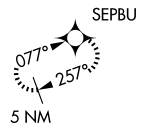
MISSED APPROACH: Climb to 5000 direct SEPBU and hold.

116 AWOS-3
120.625

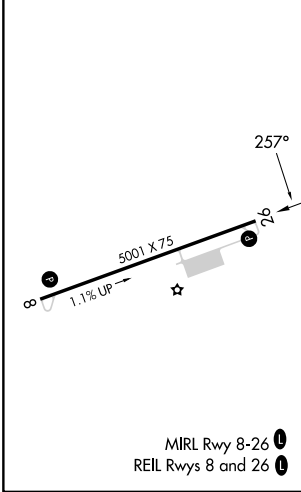
INDIANAPOLIS CENTER
126.575 257.85

UNICOM
122.8 (CTAF) 0

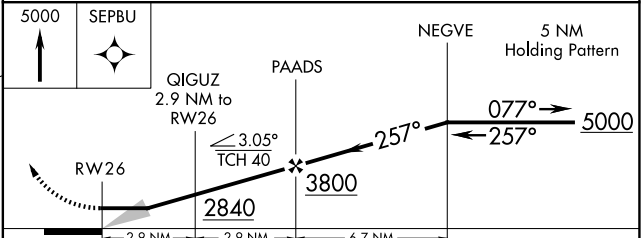
MISSED APCH FIX



ELEV 1883 TDZE 1883



MIRL Rwy 8-26 0
REIL Rwys 8 and 26 0



CATEGORY	A	B	C	D
LNAV MDA	2660-1 777 (800-1)	2660-1¼ 777 (800-1¼)	2660-2½	777 (800-2½)
CIRCLING	2680-1	797 (800-1)	2760-2½ 877 (900-2½)	2900-3 1017 (1100-3)

NE-4, 19 MAR 2026 to 16 APR 2026

NE-4, 19 MAR 2026 to 16 APR 2026