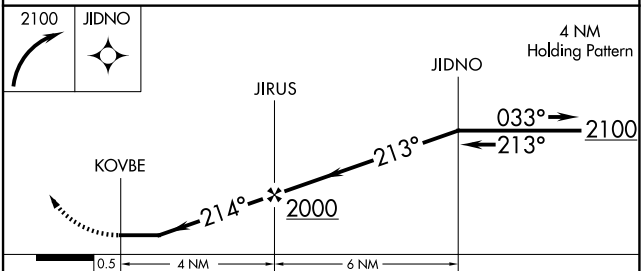
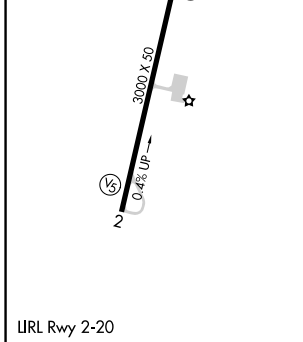
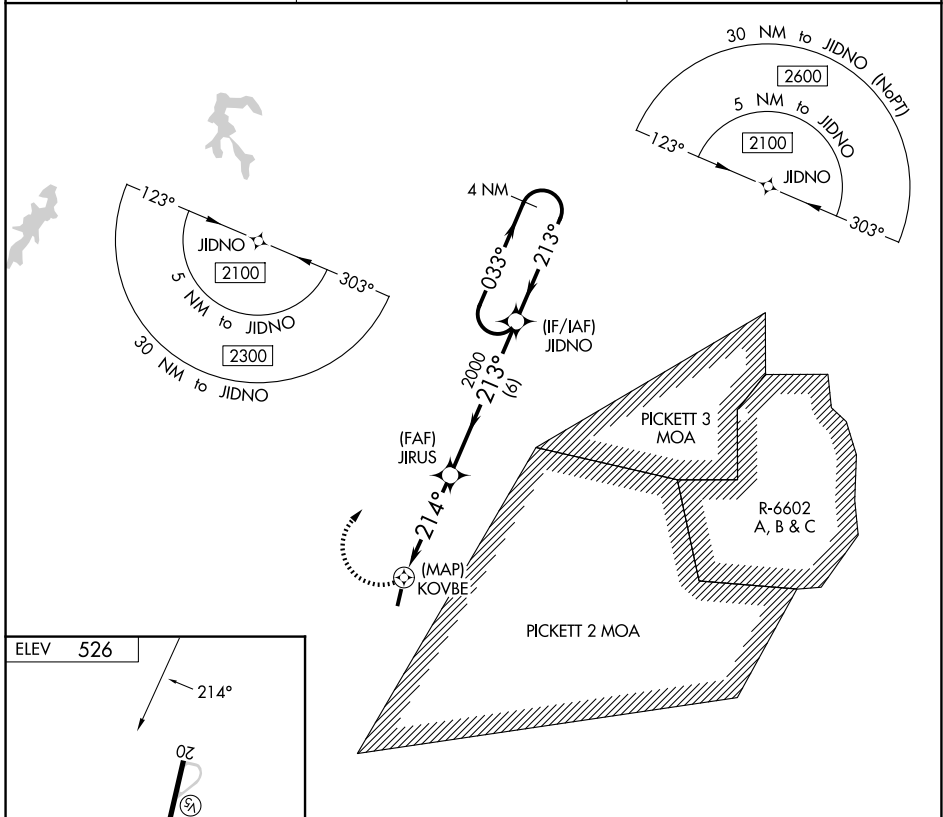


APP CRS 214°	Rwy Ldg TDZE Apt Elev	N/A N/A 526
------------------------	-----------------------------	--

RNAV (GPS)-B
LUNENBURG COUNTY (W31)

<p>⚠ Helicopter visibility reduction below 1 SM NA. DME/DME RNP-0.3 NA. Procedure NA at night. When local altimeter setting not received, use Blackstone altimeter setting and increase all MDA 60 feet.</p>	<p>MISSED APPROACH: Climbing right turn to 2100 direct JIDNO and hold.</p>
---	--

AWOS-3 123.875	WASHINGTON CENTER 118.75 377.1	UNICOM 122.7 (CTAF)
--------------------------	--	-------------------------------



CATEGORY	A	B	C	D
CIRCLING	1540-3	1014 (1100-3)	NA	

NE-3, 19 MAR 2026 to 16 APR 2026

NE-3, 19 MAR 2026 to 16 APR 2026