

|                        |                             |  |
|------------------------|-----------------------------|--|
| APP CRS<br><b>360°</b> | Rwy Idg<br>TDZE<br>Apt Elev | <b>N/A</b><br><b>N/A</b><br><b>489</b> |
|------------------------|-----------------------------|--|

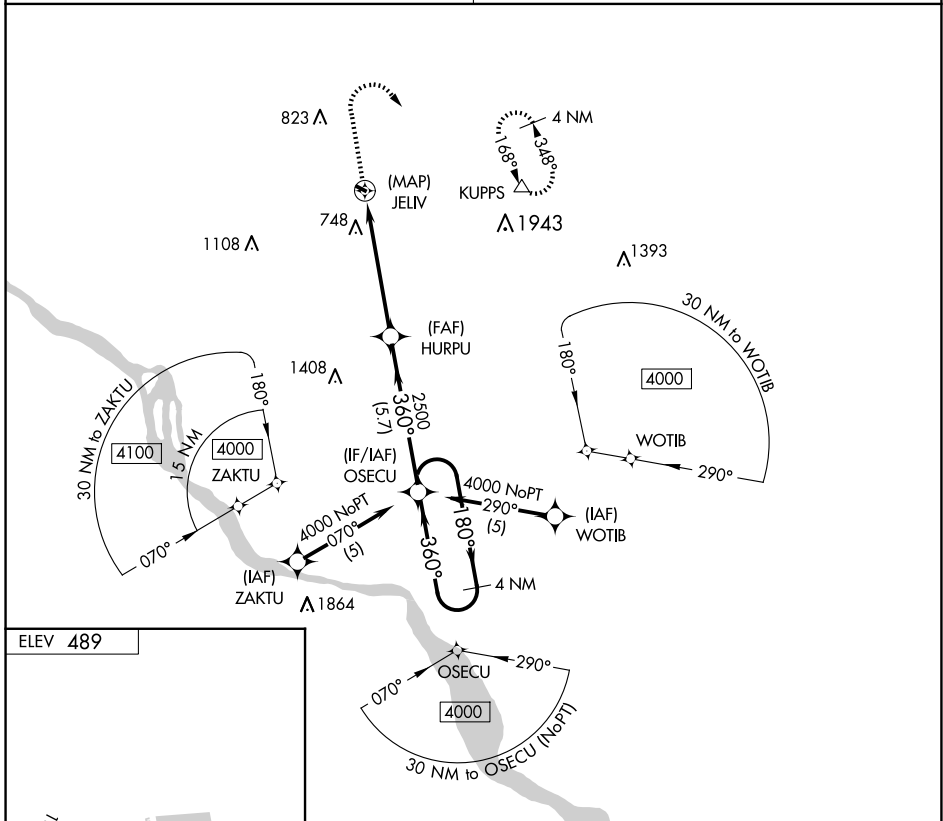
# RNAV (GPS)-A

REIGLE FLD (58N)

**NA** Procedure NA at night. DME/DME RNP-0.3 NA. Visibility reduction by helicopters NA. Use Harrisburg Intl altimeter setting, when not received, use Fort Indiantown Gap altimeter setting.

**MISSED APPROACH:** Climb to 1680 then climbing right turn to 3000 direct KUPPS and hold.

|  |  |  |
|--|--|--|
| HARRISBURG APP CON<br><b>118.25</b> <b>269.45</b> (001°-079°)<br><b>126.45</b> <b>281.525</b> (080°-210°)<br><b>124.1</b> <b>273.525</b> (211°-360°) |  | UNICOM<br><b>122.8</b> (CTAF) <b>0</b> |
|--|--|--|



NE-4, 19 MAR 2026 to 16 APR 2026

NE-4, 19 MAR 2026 to 16 APR 2026

