

RNAV (GPS) RWY 35

APCH CRS	Rwy ldg	3820
350°	TDZE	925
	Arprt Elev	933

[USAF]

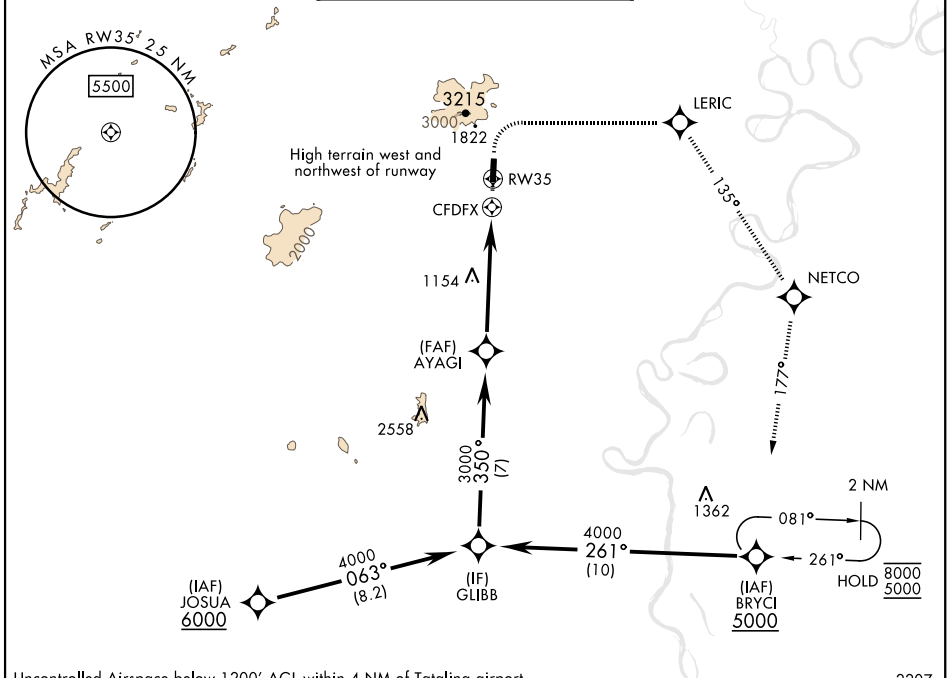
TATALINA LRSS (PATL)

RNP APCH

▼ Circling not authorized to Rwy 17. Night Operations not authorized.

MISSED APPROACH: (Do not exceed 165 KIAS until initial turn completion). Climb to 1500 then climbing right turn to 5000 direct LERIC, track 135° to NETCO, track 177° to BRYCI and hold.

KENAI RADIO 122.3	UNICOM 126.2 (CTAF) 364.2	AWOS-3
-----------------------------	-------------------------------------	--------



AK, 19 MAR 2026 to 14 MAY 2026

AK, 19 MAR 2026 to 14 MAY 2026

Uncontrolled Airspace below 1200' AGL within 4 NM of Tatalina airport

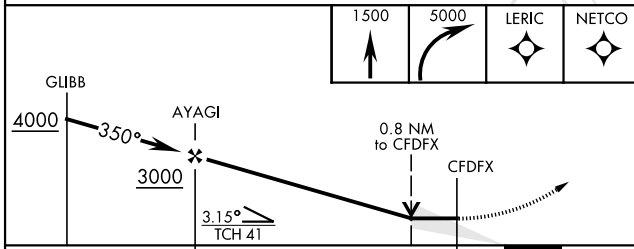
2207 A

NOT FOR CIVIL USE

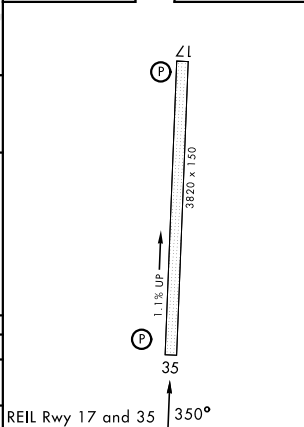
EMERG SAFE ALT 100 NM 12,000

MILITARY CERTIFIED AIRCREWS OR AUTHORIZED CONTRACT AIRCRAFT ONLY

ELEV 933	TDZE 925
----------	----------



CATEGORY	A	B	C	D
RNAV MDA	1500-1¼	575 (600-1¼)	1520-1¾ 595 (600-1¾)	NOT AUTHORIZED
CIRCLING	NOT AUTHORIZED			



RNAV (GPS) RWY 35