

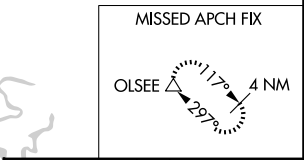
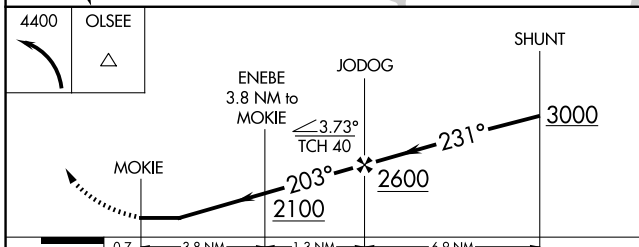
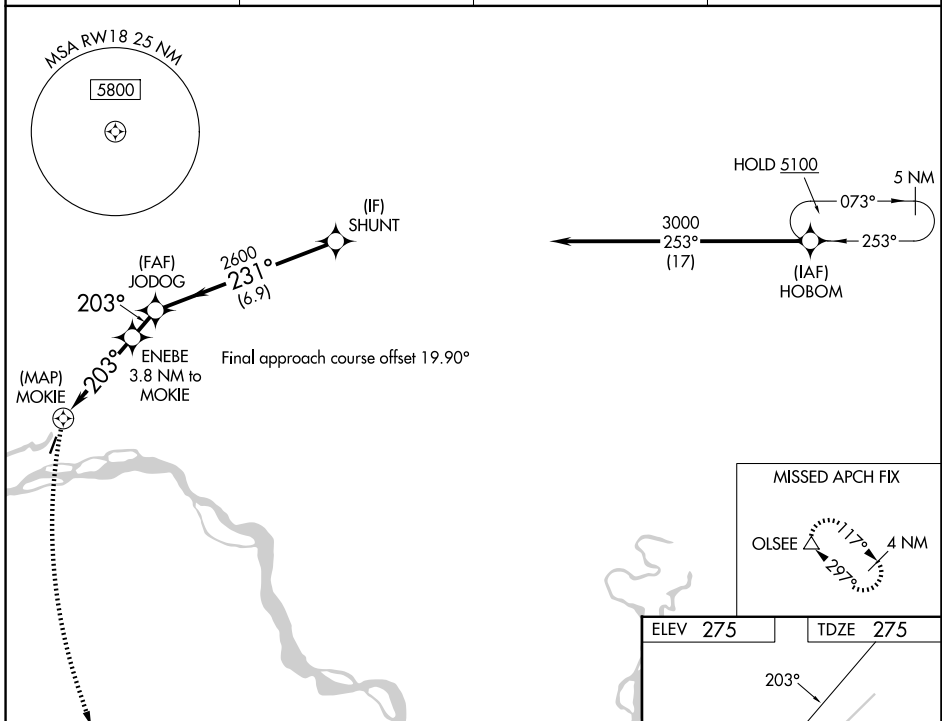
WAAS CH <b>69541</b> <b>W18A</b>	APP CRS <b>203°</b>	Rwy Ldg TDZE Apt Elev	<b>3400</b> <b>275</b> <b>275</b>
--	------------------------	-----------------------------	---

# RNAV (GPS) RWY 18

MANLEY HOT SPRINGS (MLY)(P.A.M.L)

RNP APCH - GPS.	<p>Procedure NA at night. Rwy 18 helicopter visibility reduction below 1 SM NA. Circling NA west of Rwy 18-36. Use TAL/PATA altimeter setting; when not received, procedure NA.</p>	<p>MISSED APPROACH: Climbing left turn to 4400 direct OLSEE and hold.</p>
-----------------	---	---

TAL/PATA ASOS <b>135.1</b>	ANCHORAGE CENTER <b>120.9 319.2</b>	FAIRBANKS RADIO <b>122.3 122.65</b>	UNICOM <b>122.8(CTAF) 0</b>
-------------------------------	--	--	--------------------------------



ELEV 275	TDZE 275
MIRL Rwy 18-36 0	

CATEGORY	A	B	C	D
LP MDA	1860-1¼ 1585 (1600-1¼)	1860-1½ 1585 (1600-1½)	1860-3 1585 (1600-3)	NA
LNVA MDA	2040-1¼ 1765 (1800-1¼)	2040-1½ 1765 (1800-1½)	2040-3 1765 (1800-3)	NA
CIRCLING	2040-1¼ 1765 (1800-1¼)	2040-1½ 1765 (1800-1½)	2040-3 1765 (1800-3)	NA

AK, 19 MAR 2026 to 14 MAY 2026

AK, 19 MAR 2026 to 14 MAY 2026