

WAAS CH <b>65839</b> <b>W03A</b>	APP CRS <b>034°</b>	Rwy Ldg TDZE Apt Elev	<b>5021</b> <b>5503</b> <b>5516</b>
--	------------------------	-----------------------------	---

# RNAV (GPS) RWY 3

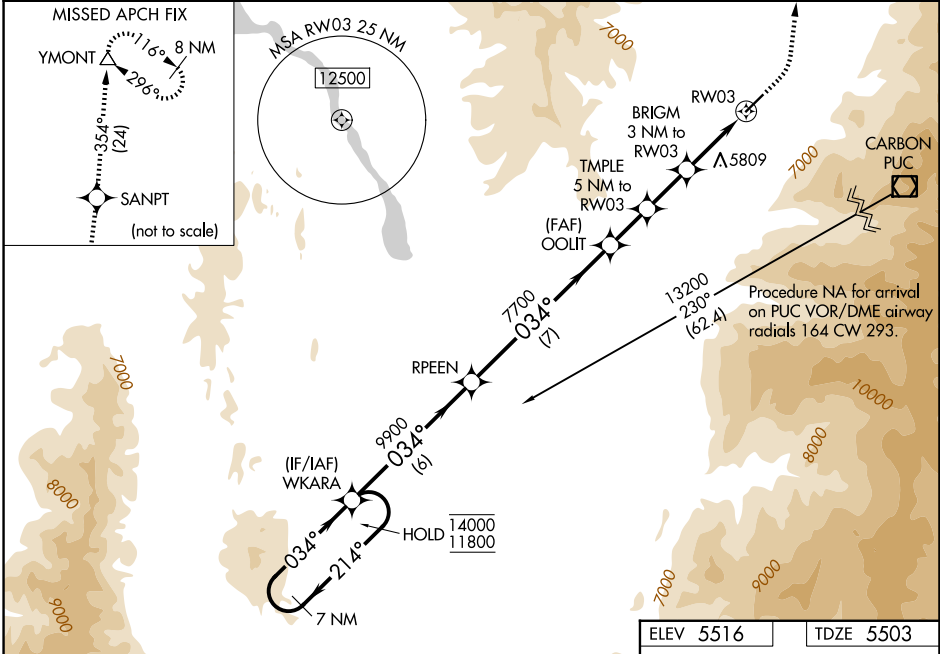
SANPETE COUNTY RGNL (41U)

RNP APCH - GPS.

▼ When local altimeter setting not received, procedure NA. Procedure  
 ▲ NA at night. Rwy 3 helicopter visibility reduction below 1 SM NA.  
 Circling NA southeast of Rwy 3-21. Baro-VNAV NA.

MISSED APPROACH: Climb to 6020 then climbing left turn to 13000 direct SANPT and on track 354° direct YMONT and hold.

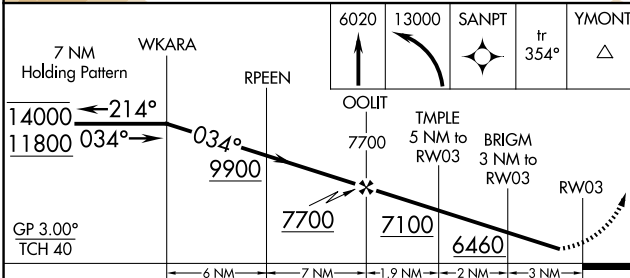
AWOS-3PT <b>120.025</b>	SALT LAKE CENTER <b>133.6 296.25</b>	UNICOM <b>122.8 (CTAF) 0</b>
----------------------------	---	---------------------------------



SW-4, 19 MAR 2026 to 16 APR 2026

SW-4, 19 MAR 2026 to 16 APR 2026

ELEV 5516	TDZE 5503
-----------	-----------



CATEGORY	A	B	C	D
LPV DA	5781-1 278 (300-1)			
LNAV/VNAV DA	5823-1 320 (400-1)			NA
LNAV MDA	6000-1 497 (500-1)		6180-1 7/8 677 (700-1 7/8)	
CIRCLING	6000-1 484 (500-1)		6280-2 1/4 764 (800-2 1/4)	7620-3 2104 (2200-3)

