

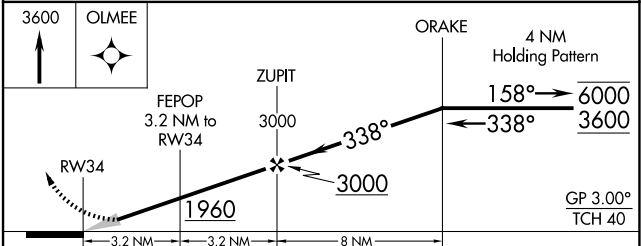
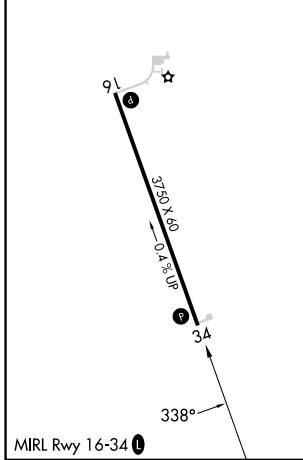
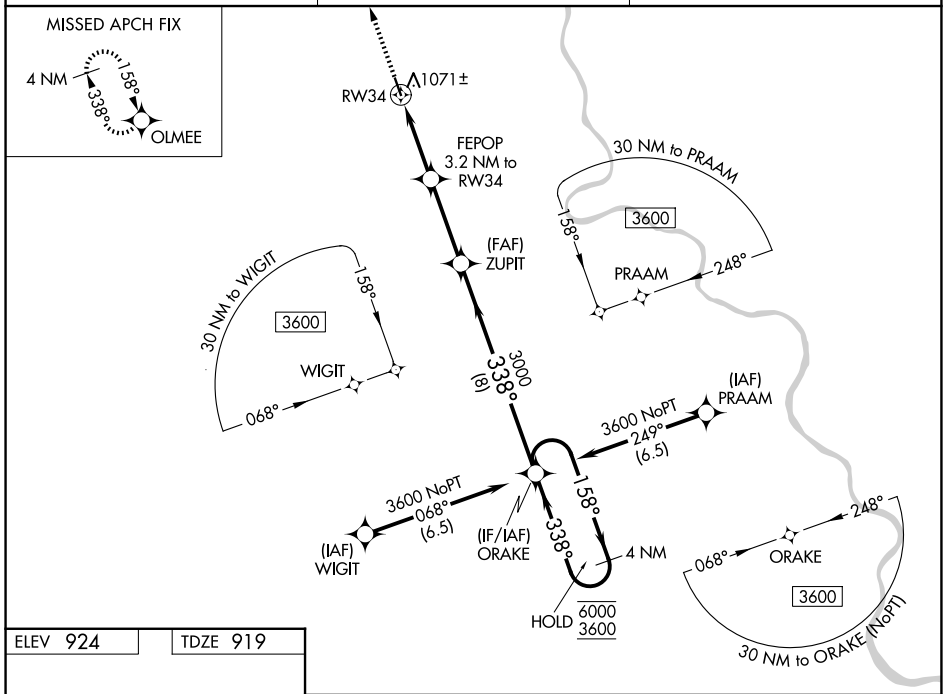
WAAS CH 42842 W34A	APP CRS 338°	Rwy Ldg 3750 TDZE 919 Apt Elev 924
--	------------------------	---

RNAV (GPS) RWY 34

FARINGTON FLD (K01)

RNP APCH - GPS.	MISSED APPROACH: Climb to 3600 direct OLMEE and hold.
<p>▼ Circling NA for Cat C west of Rwy 16-34.</p> <p>▲ NA Baro-VNAV NA.</p> <p>Use FNB altimeter setting.</p>	

FNB ASOS 119.275	MINNEAPOLIS CENTER 128.75 346.3	CTAF 122.9 0
----------------------------	---	------------------------



CATEGORY	A	B	C	D
LPV DA	1175-1 256 (300-1)			NA
LNAV/VNAV DA	1302-1 1/8 383 (400-1 1/8)			NA
LNAV MDA	1400-1	481 (500-1)	1400-1 3/8 481 (500-1 3/8)	NA
CIRCLING	1500-1 576 (600-1)	1540-1 616 (700-1)	1580-1 3/4 656 (700-1 3/4)	NA

NC-2, 19 MAR 2026 to 16 APR 2026

NC-2, 19 MAR 2026 to 16 APR 2026