

APP CRS	Rwy Idg	5086
175°	TDZE	3176
	Apt Elev	3176

RNAV (GPS) RWY 17

LUBBOCK EXEC AIRPARK (F82)

RNP APCH - GPS.

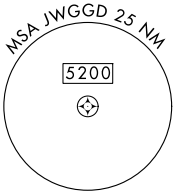
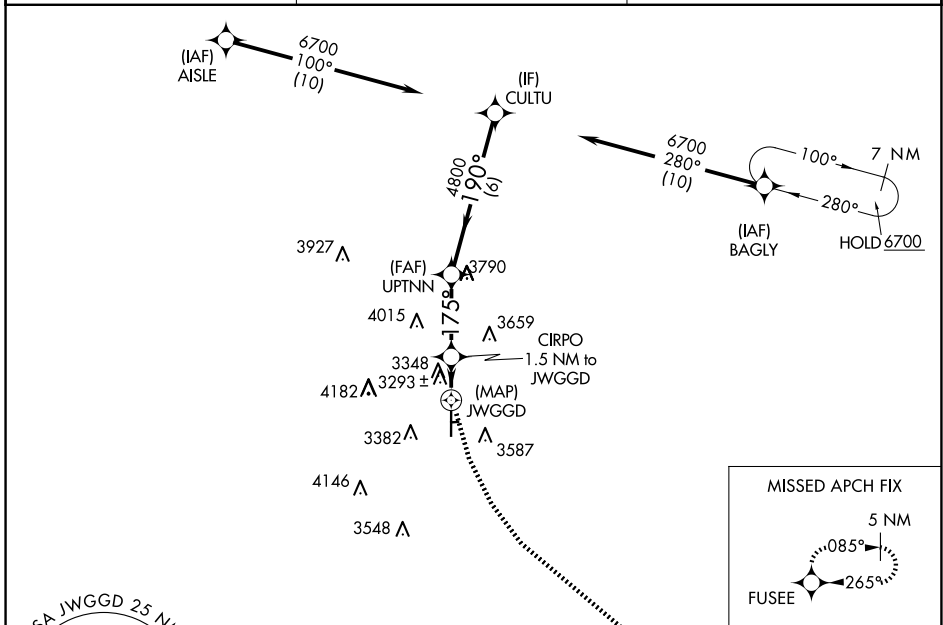
▼ Use LBB altimeter setting.
▲ NA Rwy 17 helicopter visibility reduction below 1 SM NA.
 Circling NA east of Rwy 17-35.

MISSED APPROACH: Climbing left turn to 5000 direct FUSEE and hold.

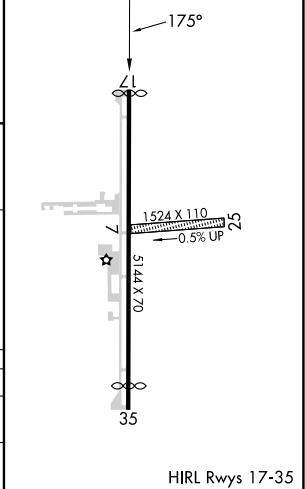
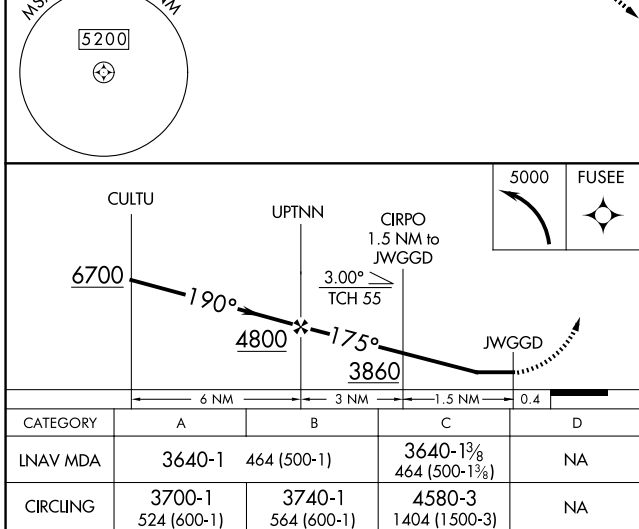
LBB ASOS
125.3 270.275

LUBBOCK APP CON
119.2 351.8

UNICOM
122.8 (CTAF)



ELEV 3176	TDZE 3176
-----------	-----------



SC-2, 19 MAR 2026 to 16 APR 2026

SC-2, 19 MAR 2026 to 16 APR 2026