

LOC/DME I-EMB <b>109.75</b> Chan <b>34</b> (Y)	APP CRS <b>175°</b>	Rwy Ldg TDZE <b>7202</b> <b>1771</b> Apt Elev <b>1791</b>
--	------------------------	---

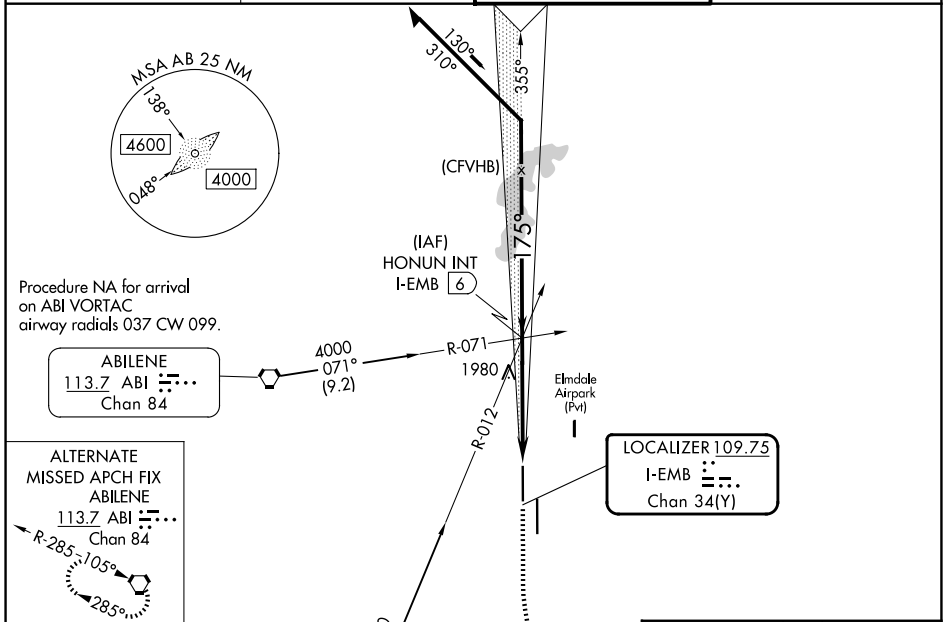
# LOC RWY 17R

ABILENE RGNL (ABI)

ADF required for missed approach.

MISSED APPROACH: Climb to 2800 then climbing left turn to 4000 direct TOMHI LOM and hold.

ATIS <b>118.25</b>	ABILENE APP CON <b>125.0 338.3</b> (EAST) <b>127.2 282.3</b> (WEST)	ABILENE TOWER <b>120.1 257.8</b>	GND CON <b>121.7 348.6</b>
-----------------------	---	-------------------------------------	-------------------------------



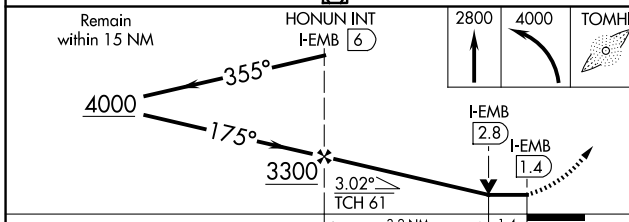
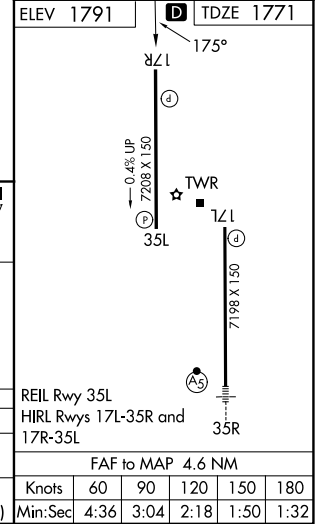
Procedure NA for arrival on ABI VORTAC airway radials 037 CW 099.

ABILENE  
113.7 ABI  
Chan 84

ALTERNATE MISSED APCH FIX ABILENE  
113.7 ABI  
Chan 84

Procedure NA for arrival on TQA VOR/DME airway radial 082.

TUSCOLA  
111.6 TQA  
Chan 53



CATEGORY	A	B	C	D	E
S-LOC 17R	2280-1	509 (500-1)	2280-1 $\frac{3}{8}$ 509 (500-1 $\frac{3}{8}$ )		
CIRCLING	2300-1 509 (600-1)	2320-1 529 (600-1)	2420-1 $\frac{3}{4}$ 629 (700-1 $\frac{3}{4}$ )	2460-2 669 (700-2)	2620-3 829 (900-3)

SC-2, 16 APR 2026 to 14 MAY 2026

SC-2, 16 APR 2026 to 14 MAY 2026