

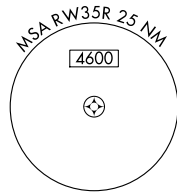
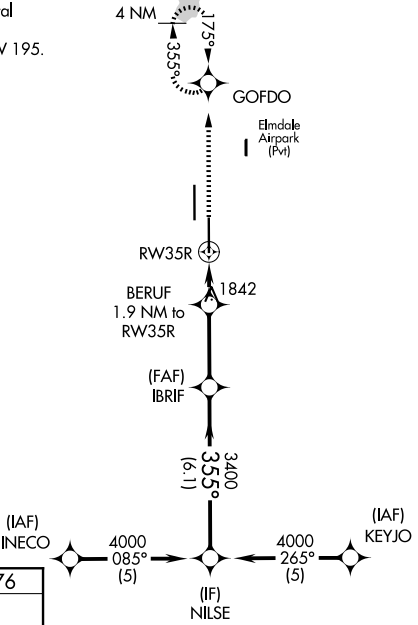
WAAS CH 97517 W35A	APP CRS 355°	Rwy Ldg TDZE Apt Elev	7198 1776 1791
--	------------------------	-----------------------------	---

RNAV (GPS) RWY 35R

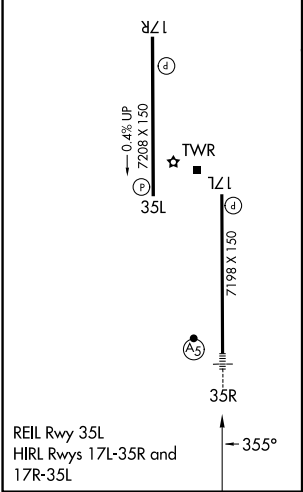
ABILENE RGNL (ABI)

RNP APCH.		MALSR	MISSED APPROACH: Climb to 4000 direct GOFDO and hold, continue climb-in-hold to 4000.
For uncompensated Baro-VNAV systems, LNAV/VNAV NA below -18°C or above 45°C. For inop ALS, increase LPV Cat E visibility to RVR 4000, LNAV/VNAV all Cats to RVR 6000, and LNAV Cats C/D/E to 1¾ SM. ** RVR 1800 authorized with use of FD or AP or HUD to DA.			
ATIS 118.25	ABILENE APP CON 125.0 338.3 (EAST) 127.2 282.3 (WEST)	ABILENE TOWER 120.1 257.8	GND CON 121.7 348.6

Procedure NA for arrival on ABI VORTAC airway radials 099 CW 195.



ELEV 1791	D	TDZE 1776
-----------	----------	-----------



4000	GOFDO	BERUF 1.9 NM to RW35R	IBRIF	NILSE	4000
*LNAV only.		*1.3 NM to RW35R	3400	355°	GP 3.00° TCH 58
-1.3 NM		0.6	3 NM	6.1 NM	
CATEGORY	A	B	C	D	E
LPV DA**	1976/24 200 (200-½)				
LNAV/VNAV DA	2189/40 413 (400-¾)				2189/50 413 (400-1)
LNAV MDA	2260/24 484 (500-½)		2260/50 484 (500-1)		
CIRCLING	2300-1 509 (600-1)	2320-1 529 (600-1)	2420-1¾ 629 (700-1¾)	2460-2 669 (700-2)	2620-3 829 (900-3)

SC-2, 16 APR 2026 to 14 MAY 2026

SC-2, 16 APR 2026 to 14 MAY 2026