

ABILENE, TEXAS

ILS or LOC W RWY 16

LOC I-TYY 109.9	APCH CRS 164°	Rwy Idg 13,499 TDZE 1790 Arprt Elev 1799	[USAF]	DYESS AFB (KDYS)
---------------------------	-------------------------	---	--------	------------------

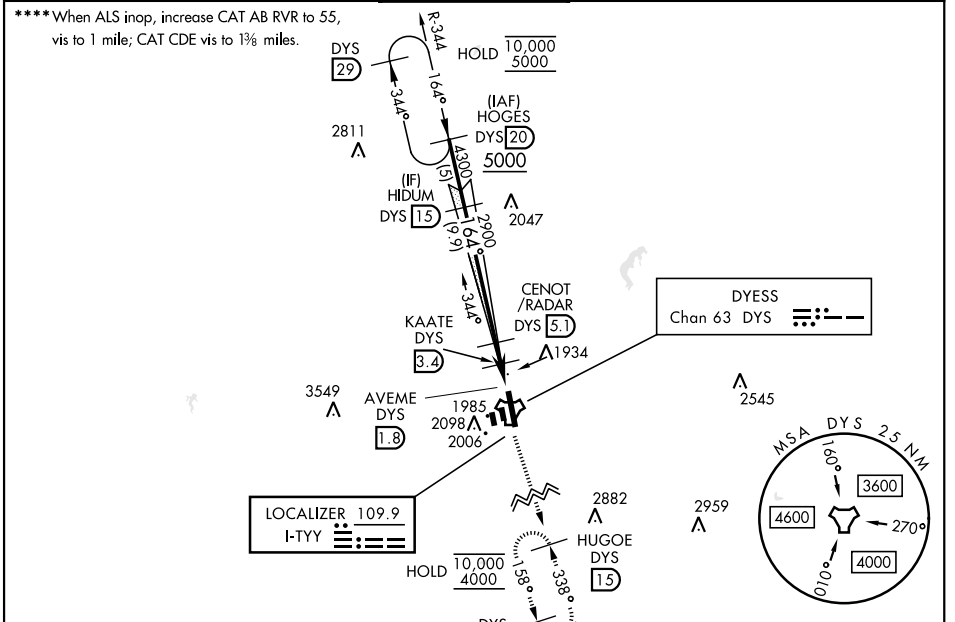
RADAR or DME required.

* When ALS inop, increase RVR to 40 and vis to ¾ mile.
 ** When ALS inop, increase CAT AB RVR to 55, vis to 1 mile; CDE RVR to 60, vis to 1½ miles.
 *** Circling to other than Rwy 34 not authorized.

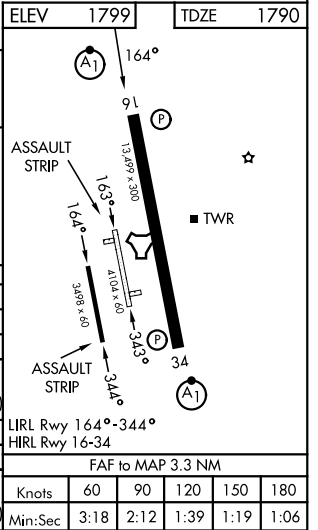
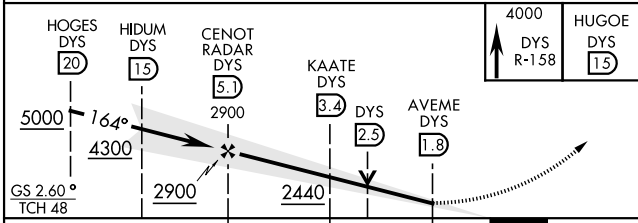
ALSF-1

MISSED APPROACH: Climb to 4000 via DYS TACAN R-158 to HUGOE and hold.

ATIS ★ 269.175	ABILENE APP CON 125.0 338.3 EAST 127.2 282.3 WEST	DYESS TOWER 133.0 257.675	GND CON 118.35 275.8	ASR
--------------------------	---	-------------------------------------	--------------------------------	-----



EMERG SAFE ALT 100 NM 4600	ELEV 1799	TDZE 1790
----------------------------	-----------	-----------



CATEGORY	A	B	C	D	E
S-ILS 16*	1990/24		200	(200-½)	
S-LOC 16**	2260/24	470 (500-½)	2260/50	470	(500-1)
CIRCLING ***	2300-1	2320-1	2440-1¾	2480-2¼	2540-2¾
	510 (600-1)	530 (600-1)	650 (700-1¾)	690 (700-2¼)	750 (800-2¾)
KAATE FIX MINIMA					
S-LOC 16****	2200/24	410 (500-½)	2200/40	410	(500-¾)
CIRCLING ***	2300-1	2320-1	2440-1¾	2480-2¼	2540-2¾
	510 (600-1)	530 (600-1)	650 (700-1¾)	690 (700-2¼)	750 (800-2¾)

ABILENE, TEXAS 32°25'N-99°51'W DYESS AFB (KDYS)

Amtd 4 19MAR26

ILS or LOC W RWY 16

SC-2, 16 APR 2026 to 14 MAY 2026

SC-2, 16 APR 2026 to 14 MAY 2026