

ABILENE, TEXAS

TACAN W RWY 34

TACAN DYS Chan 63	APCH CRS 338°	Rwy Idg 13,499 TDZE 1788 Arprt Elev 1799
-----------------------------	-------------------------	---

[USAF]

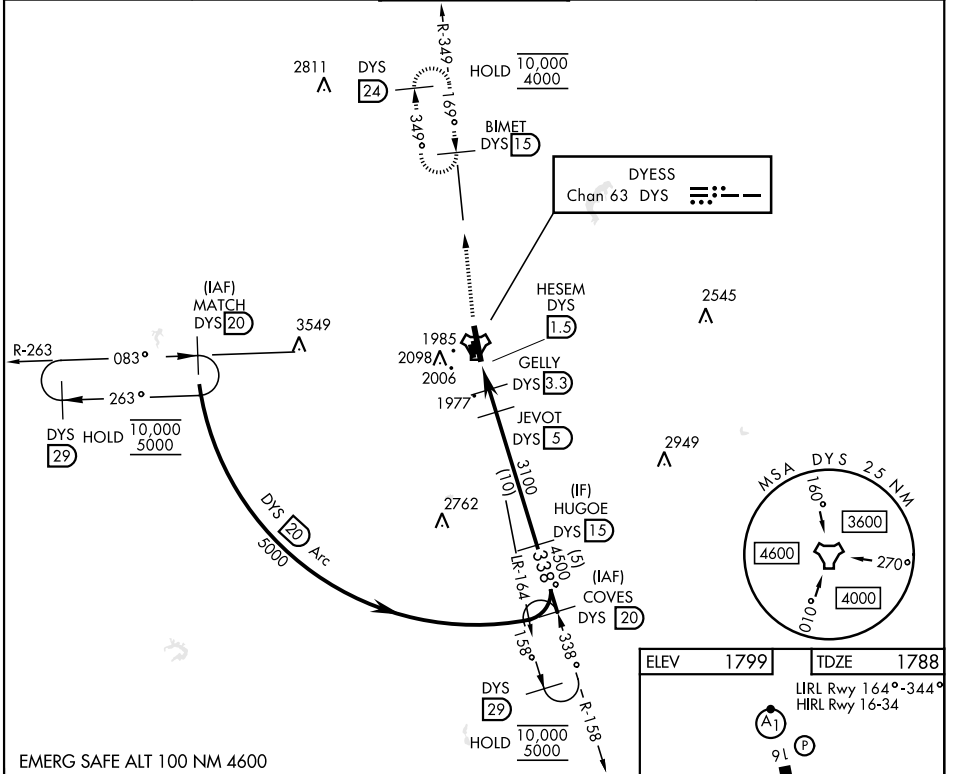
DYESS AFB (KDYS)

* When ALS inop, increase CAT AB RVR to 55, vis to 1 mile, CAT CDE vis to 1 1/8 miles.
** Circling to other than Rwy 16 not authorized.



MISSED APPROACH: Climb to 4000 via DYS TACAN R-349 to BIMET and hold.

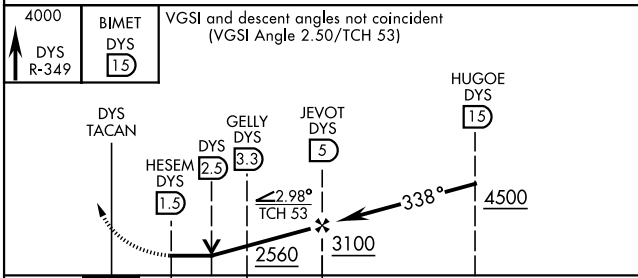
ATIS ★ 269.175	ABILENE APP CON 125.0 338.3 EAST 127.2 282.3 WEST	DYESS TOWER 133.0 257.675	GND CON 118.35 275.8	ASR
--------------------------	---	-------------------------------------	--------------------------------	-----



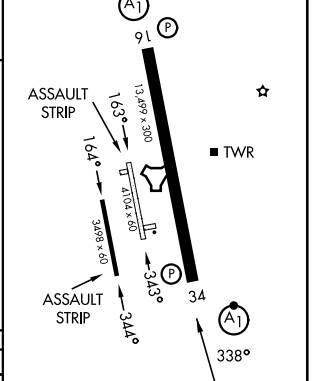
SC-2, 16 APR 2026 to 14 MAY 2026

SC-2, 16 APR 2026 to 14 MAY 2026

EMERG SAFE ALT 100 NM 4600



ELEV 1799	TDZE 1788
LIRL Rwy 164°-344° HIRL Rwy 16-34	



CATEGORY	A	B	C	D	E
S-34 *	2240/24 452 (500-1/2)		2240/45 452 (500-7/8)		
CIRCLING **	2300-1 510 (600-1)	2320-1 530 (600-1)	2440-1 3/4 650 (700-1 3/4)	2480-2 1/4 690 (700-2 1/4)	2540-2 3/4 750 (800-2 3/4)

FAF to MAP 3.5 NM					
Knots	60	90	120	150	180
Min:Sec	3:30	2:20	1:45	1:24	1:10

ABILENE, TEXAS
Amdt 4 02OCT25

32°25'N-99°51'W

DYESS AFB (KDYS)

TACAN W RWY 34