

VOR/DME RWY 16

VOR/DME TQA 111.6 Chan 53	APCH CRS 160°	Rwy Idg 13,499 TDZE 1790 Arprt Elev 1799
---	-------------------------	---

[USAF]

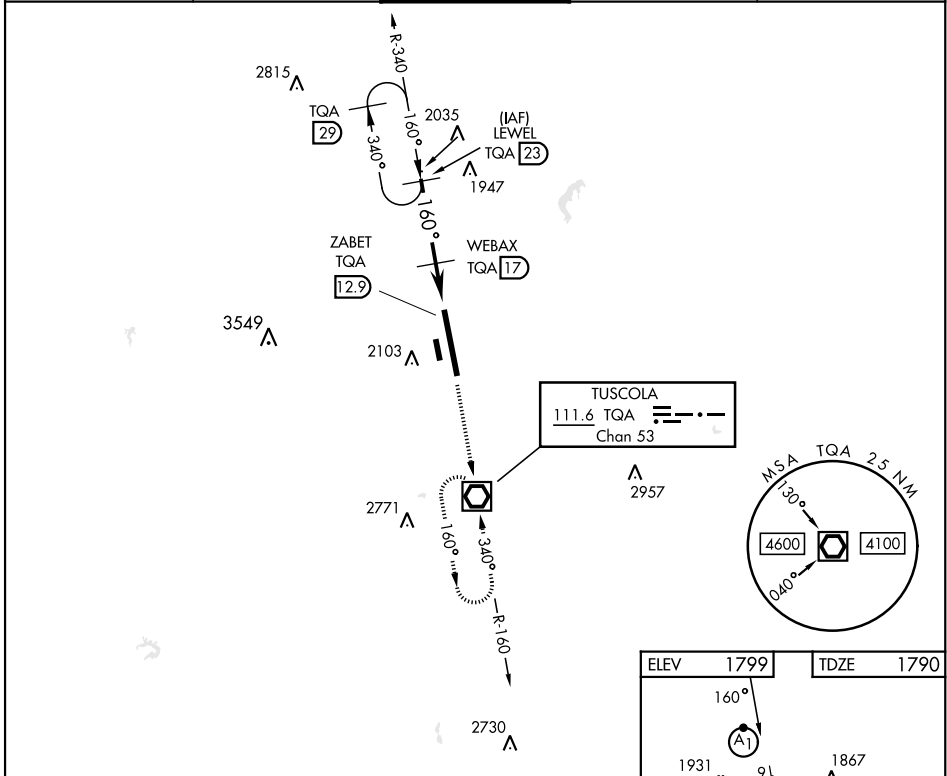
DYESS AFB (KDYS)

* When ALS inop, increase CAT AB RVR to 55 and vis to 1 mile, CAT CDE vis to 1 3/8 miles.
 ** Circling to other than Rwy 34 NA.

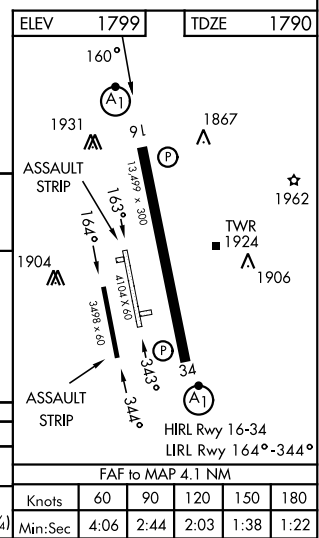
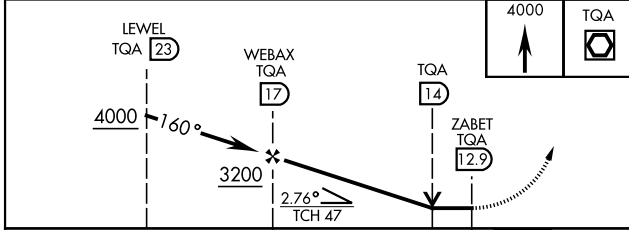


MISSED APPROACH: Climb and maintain 4000 proceed direct TQA and hold.

ATIS ★ 269.175	ABILENE APP CON 125.0 338.3 EAST 127.2 282.3 WEST	DYESS TOWER 133.0 257.675	GND CON 118.35 275.8	ASR
--------------------------	---	-------------------------------------	--------------------------------	-----



EMERG SAFE ALT 100 NM 4600



CATEGORY	A	B	C	D	E
S-16 *	2300/24	510 (600-1/2)	2300/55	510 (600-1)	
CIRCLING **	2300-1 510 (600-1)	2320-1 530 (600-1)	2460-1 3/4 670 (700-1 3/4)	2460-2 670 (700-2)	2460-2 1/4 670 (700-2 1/4)

FAF to MAP 4.1 NM					
Knots	60	90	120	150	180
Min:Sec	4:06	2:44	2:03	1:38	1:22

VOR/DME RWY 16

SC-2, 16 APR 2026 to 14 MAY 2026

SC-2, 16 APR 2026 to 14 MAY 2026