

HI-ILS or LOC RWY 22

LOC I-HMN 111.7	APCH CRS 218°	Rwy Idg 10,578
		TDZE 4083
		Arpt Elev 4093

[USAF]

HOLLOMAN AFB (KHMM)

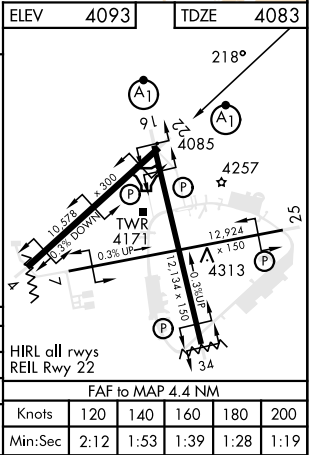
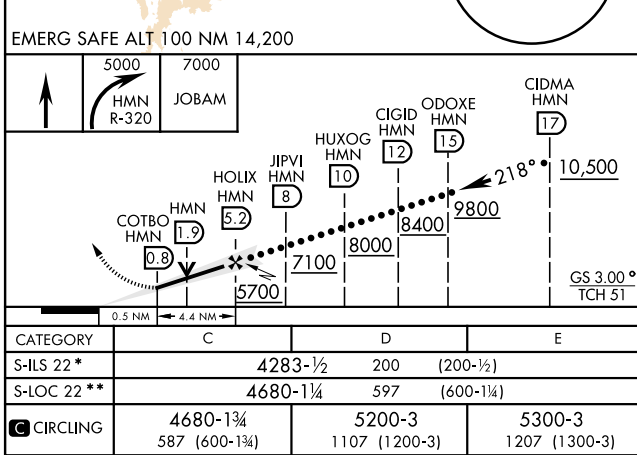
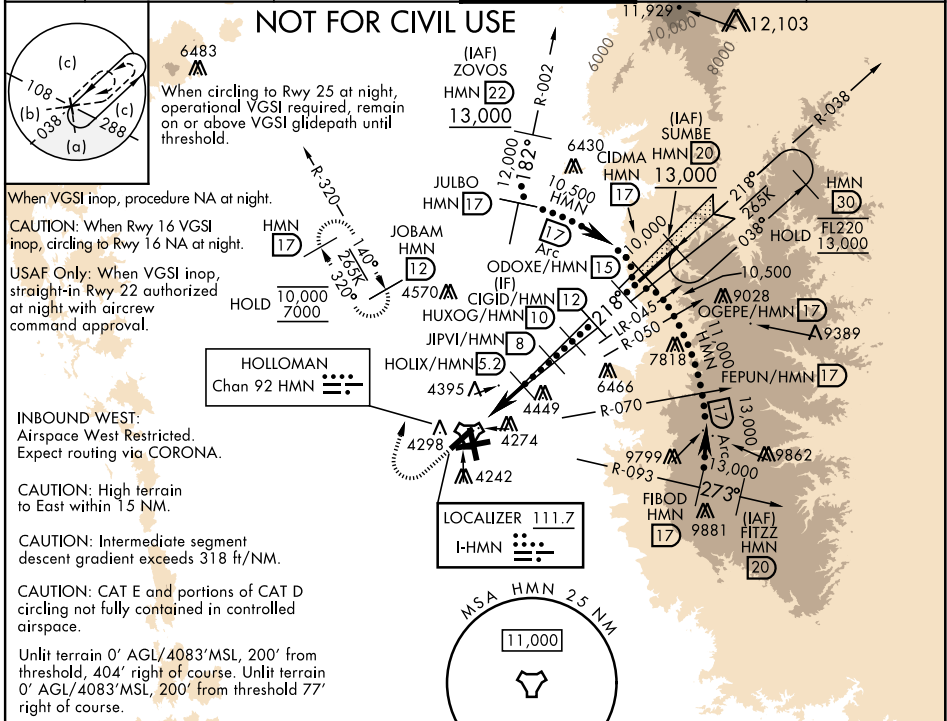
RADAR or DME required.

ALSF-1

MISSED APPROACH: Climb straight ahead to 7000, passing 5000 turn right and intercept HMN R-320 outbound to JOBAM and hold.

*When ALS inop, increase vis to 3/4 miles.
**When ALS inop, increase vis to 1 1/4 miles.

ATIS ★ 273.5	ALBUQUERQUE CENTER 132.65 257.6	APP CON 120.6 269.225	TOWER ★ 119.3 254.4	GND CON 127.05 275.8	CLNC DEL 126.7 289.4
------------------------	---	---------------------------------	-------------------------------	--------------------------------	--------------------------------



HI-ILS or LOC RWY 22

SW-1, 16 APR 2026 to 14 MAY 2026

SW-1, 16 APR 2026 to 14 MAY 2026