

# HI-TACAN RWY 16

TACAN HMN Chan 92	APCH CRS 162°	Rwy ldg 12,134 TDZE 4083 Arprt Elev 4093
----------------------	------------------	--

[USAF]

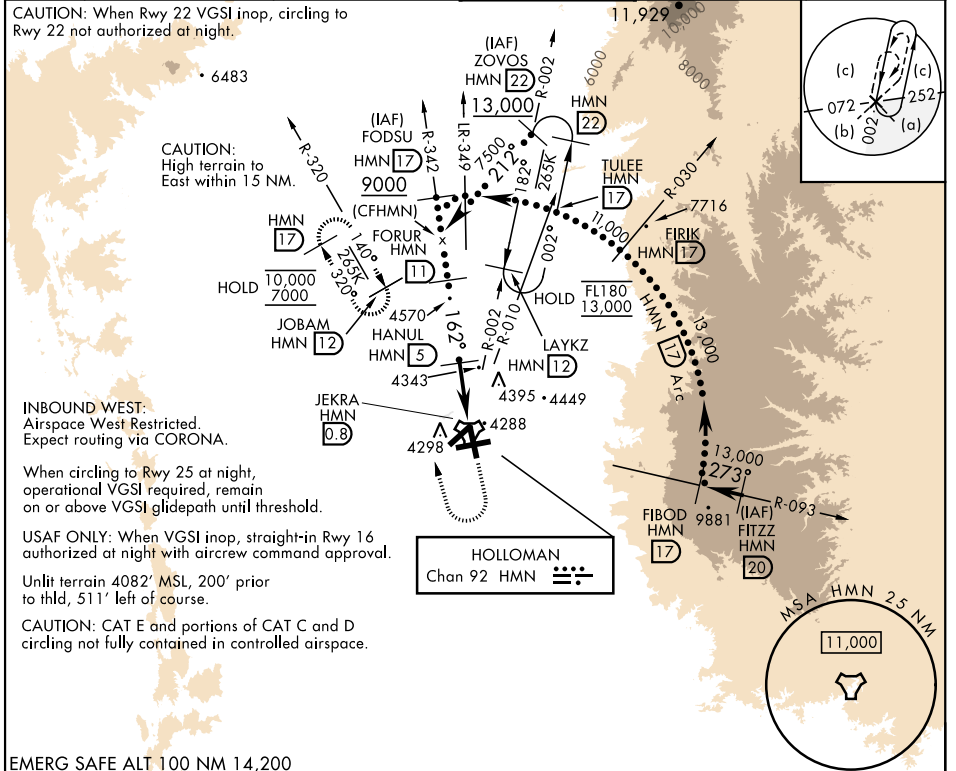
HOLLOMAN AFB (KHMN)

V \* When ALS inop, increase CAT CDE vis to 1½ miles.  
 When VGSi inop, procedure not authorized at night.

A1 ALSF-1

MISSED APPROACH: Climb straight ahead to 7000, passing 5000 turn right and intercept HMN R-320 outbound to JOBAM and hold.

ATIS ★ 273.5	ALBUQUERQUE CENTER 132.65 257.6	APP CON 120.6 269.225	TOWER ★ 119.3 254.4	GND CON 127.05 275.8	CLNC DEL 126.7 289.4
-----------------	------------------------------------	--------------------------	------------------------	-------------------------	-------------------------



EMERG SAFE ALT 100 NM 14,200

			ELEV 4093	TDZE 4083	
CATEGORY	C	D	E		
S-16 *	4620-1	537 (600-1)			
CIRCLING	5200-3	1107 (1200-3)	5300-3	1207 (1300-3)	

# HI-TACAN RWY 16

SW-1, 16 APR 2026 to 14 MAY 2026

SW-1, 16 APR 2026 to 14 MAY 2026