

IZZYY ONE DEPARTURE (RNAV) (IZZYY1.IZZYY)

HOLLOMAN AFB (KHMN)

ALAMOGORDO, NEW MEXICO

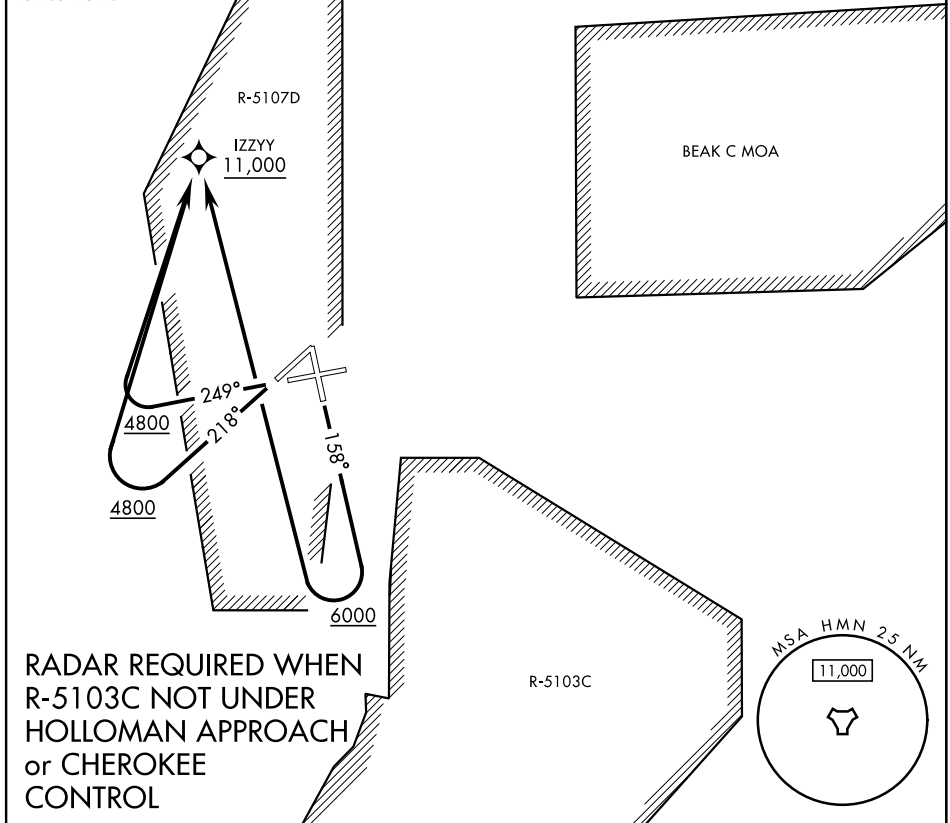
ATIS ★ 273.5
 TOWER ★ 119.3 254.4
 DEP CON 128.1 284.0
 ALBUQUERQUE CENTER 132.65 257.6

[RNAV1 - GPS]

[USAF]

Rwy	Knots	60	120	180	240	300	360
16	V/V(fpm)	425	850	1275	1700	2125	2550
22	V/V(fpm)	416	832	1248	1664	2080	2496
25	V/V(fpm)	480	960	1440	1920	2400	2880

Minimum climb to 11,000



SW-1, 16 APR 2026 to 14 MAY 2026

SW-1, 16 APR 2026 to 14 MAY 2026

**RADAR REQUIRED WHEN
 R-5103C NOT UNDER
 HOLLOMAN APPROACH
 or CHEROKEE
 CONTROL**

DEPARTURE ROUTE DESCRIPTION

TAKEOFF RWY 16: Climb on track 158° when leaving 6000 turn right direct IZZYY, then via assigned routing. Cross IZZYY at or above 11,000.

TAKEOFF RWY 22: Climb on track 218° when leaving 4800 turn right direct IZZYY, then via assigned routing. Cross IZZYY at or above 11,000.

TAKEOFF RWY 25: Climb on track 249° when leaving 4800 turn right direct IZZYY, then via assigned routing. Cross IZZYY at or above 11,000.

IZZYY ONE DEPARTURE (RNAV) (IZZYY1.IZZYY)

ALAMOGORDO, NEW MEXICO

HOLLOMAN AFB (KHMN)