

WAAS CH <b>97415</b> <b>W35A</b>	APP CRS <b>347°</b>	Rwy Ldg <b>5200</b> TDZE <b>196</b> Apt Elev <b>196</b>
--	------------------------	---

# RNAV (GPS) RWY 35

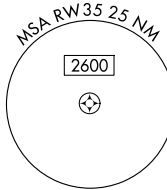
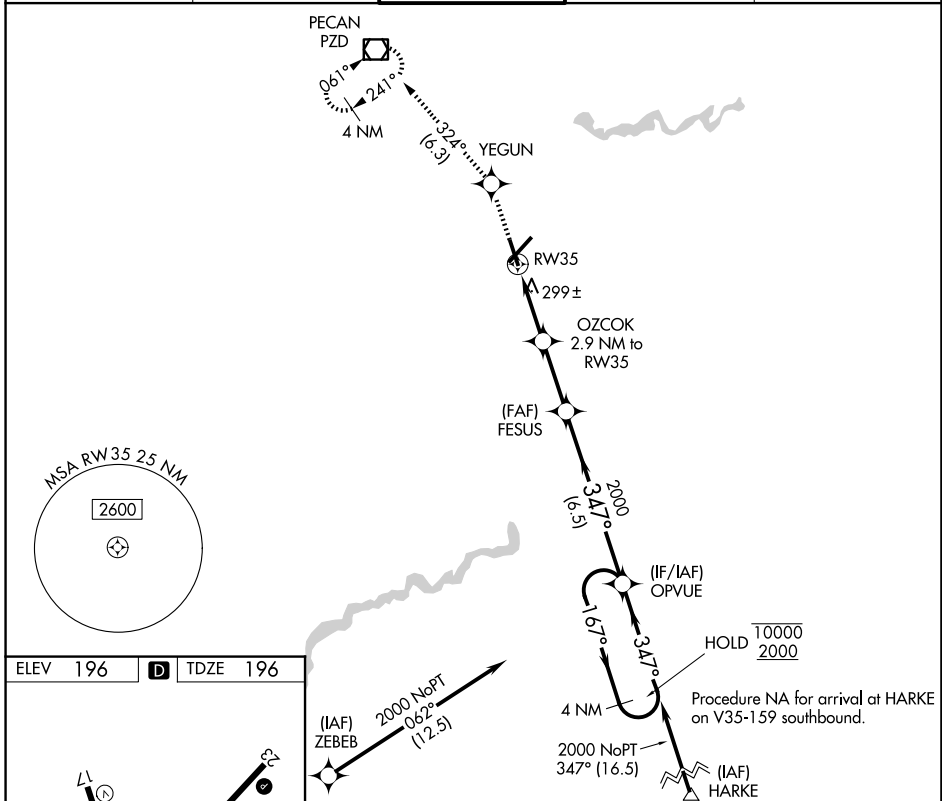
SOUTHWEST GEORGIA RGNL (ABY)

RNP APCH.

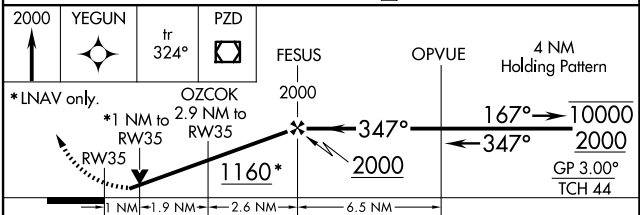
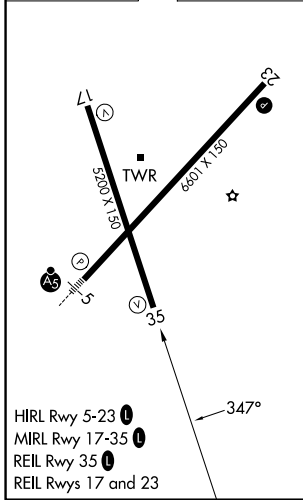
▼ For uncompensated Baro-VNAV systems, LNAV/VNAV NA below -7°C or above 54°C. Rwy 35 helicopter visibility reduction below 3/4 SM NA.

ATIS <b>133.05</b>	JACKSONVILLE CENTER <b>125.75 363.075</b>	ALBANY TOWER * <b>120.25 (CTAF) 0336.4</b>	GND CON <b>121.9 348.6</b>	UNICOM <b>122.95</b>
-----------------------	--	---	-------------------------------	-------------------------

MISSED APPROACH: Climb to 2000 direct YEGUN and on track 324° to PZD VOR/DME and hold.



ELEV 196	<b>D</b>	TDZE 196
----------	----------	----------



CATEGORY	A	B	C	D
LPV DA		495-1	299 (300-1)	
LNAV/VNAV DA		475-1	279 (300-1)	
LNAV MDA		560-1	364 (400-1)	
CIRCLING	640-1 444 (500-1)	660-1 464 (500-1)	940-2 1/4 744 (800-2 1/4)	940-2 1/2 744 (800-2 1/2)

SE-4, 16 APR 2026 to 14 MAY 2026

SE-4, 16 APR 2026 to 14 MAY 2026