

VOR/DME PZD 116.1 Chan 108	APP CRS 147°	Rwy Ldg 5200 TDZE 196 Apt Elev 196
------------------------------------------------	------------------------	---------------------------------------------------------------

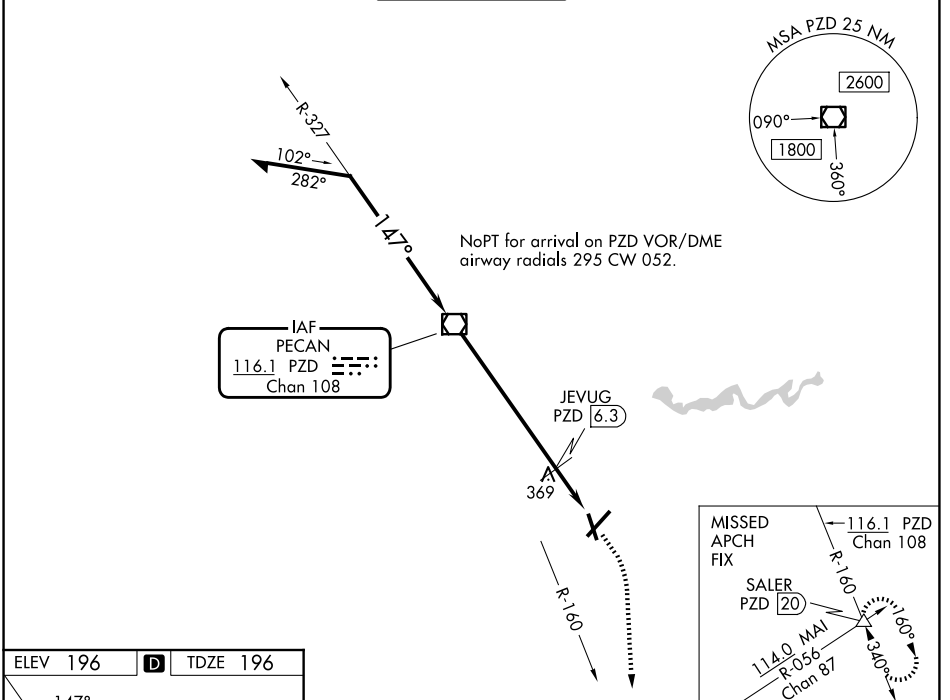
VOR RWY 17

SOUTHWEST GEORGIA RGNL (ABY)

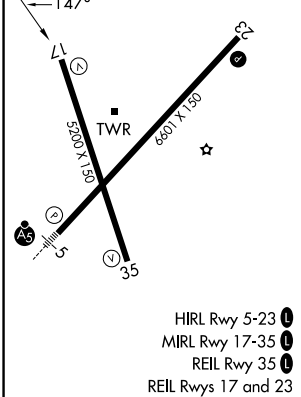
⚠ Rwy 17 helicopter visibility reduction below 3/4 SM NA.

⚠ MISSED APPROACH: Climb to 1000 then climbing right turn to 3000 on heading 170° and PZD VOR/DME R-160 to SALER INT/20 DME and hold.

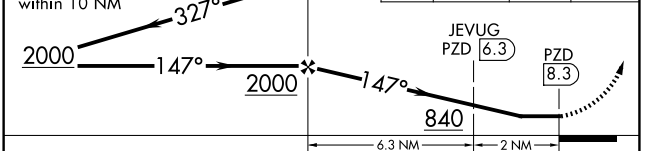
ATIS 133.05	JACKSONVILLE CENTER 125.75 363.075	ALBANY TOWER * 120.25(CTAF) 0336.4	GND CON 121.9 348.6	UNICOM 122.95
-----------------------	----------------------------------------------	----------------------------------------------	-------------------------------	-------------------------



ELEV 196	D	TDZE 196
-----------------	----------	-----------------



VGSI and descent angles not coincident (VGSI Angle 3.00/TCH 49).
 Remain within 10 NM



CATEGORY	A	B	C	D
S-17	840-1	644 (700-1)	840-1 3/8	644 (700-1 3/8)
CIRCLING	840-1	644 (700-1)	940-2 1/4 744 (800-2 1/4)	940-2 1/2 744 (800-2 1/2)
JEVUG FIX MINIMUMS				
S-17	640-1	444 (500-1)	640-1 3/8	444 (500-1 3/8)
CIRCLING	660-1	464 (500-1)	940-2 1/4 744 (800-2 1/4)	940-2 1/2 744 (800-2 1/2)

FAF to MAP 8.3 NM					
Knots	60	90	120	150	180
Min:Sec	8:18	5:32	4:09	3:19	2:46

SE-4, 16 APR 2026 to 14 MAY 2026

SE-4, 16 APR 2026 to 14 MAY 2026