

WAAS CH <b>78124</b> <b>W28A</b>	APP CRS <b>281°</b>	Rwy Ldg TDZE Apt Elev	<b>6007</b> <b>285</b> <b>285</b>
--	------------------------	-----------------------------	---

# RNAV (GPS) RWY 28

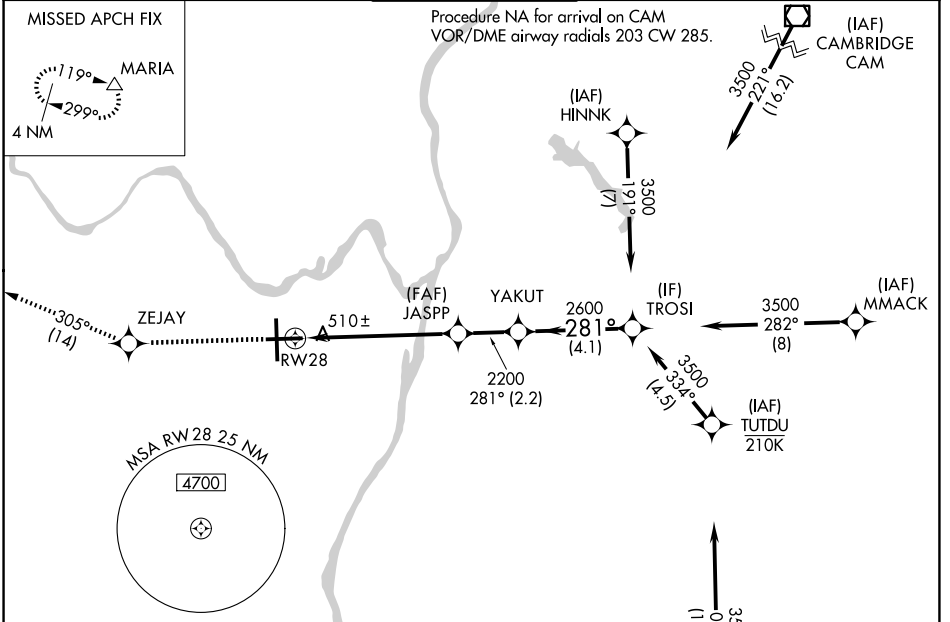
ALBANY INTL (ALB)

RNP APCH - GPS.

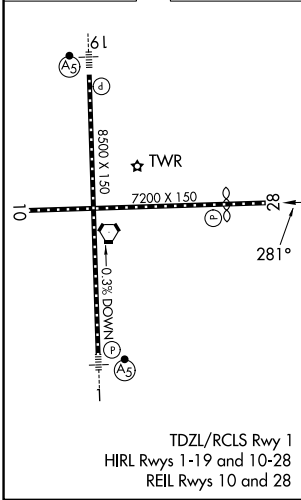
**⚠** Rwy 28 helicopter visibility reduction below  $\frac{3}{4}$  SM NA. Circling NA west of Rwy 1-19.  
**⚠** For uncompensated Baro-VNAV systems, LNAV/VNAV NA below -20°C or above 54°C.  
 Circling Rwy 10 NA at night.

MISSED APPROACH: Climb to 3500 direct ZEJAY and on track 305° to MARIA and hold.

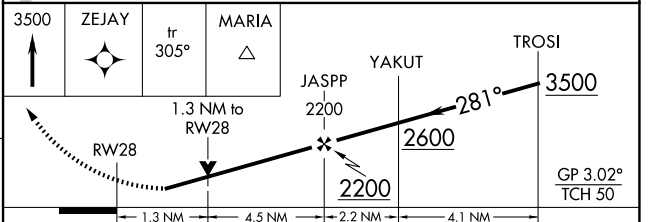
D-ATIS <b>120.45</b>	ALBANY APP CON <b>132.825 307.2</b>	ALBANY TOWER <b>119.5 257.8</b>	GND CON <b>121.7 348.6</b>	CLNC DEL <b>127.50</b>
-------------------------	--	------------------------------------	-------------------------------	---------------------------



ELEV 285	<b>D</b>	TDZE 285
----------	----------	----------



Procedure NA for arrivals at CANAN on V487 southwest bound.



CATEGORY	A	B	C	D
LPV DA	783-1 $\frac{3}{8}$ 498 (500-1 $\frac{3}{8}$ )			
LNAV/VNAV DA	825-1 $\frac{1}{2}$ 540 (600-1 $\frac{1}{2}$ )			
LNAV MDA	780-1	495 (500-1)	780-1 $\frac{3}{8}$	495 (500-1 $\frac{3}{8}$ )
CIRCLING	820-1	535 (600-1)	860-1 $\frac{1}{2}$ 575 (600-1 $\frac{1}{2}$ )	960-2 $\frac{1}{4}$ 675 (700-2 $\frac{1}{4}$ )

NE-2, 16 APR 2026 to 14 MAY 2026

NE-2, 16 APR 2026 to 14 MAY 2026