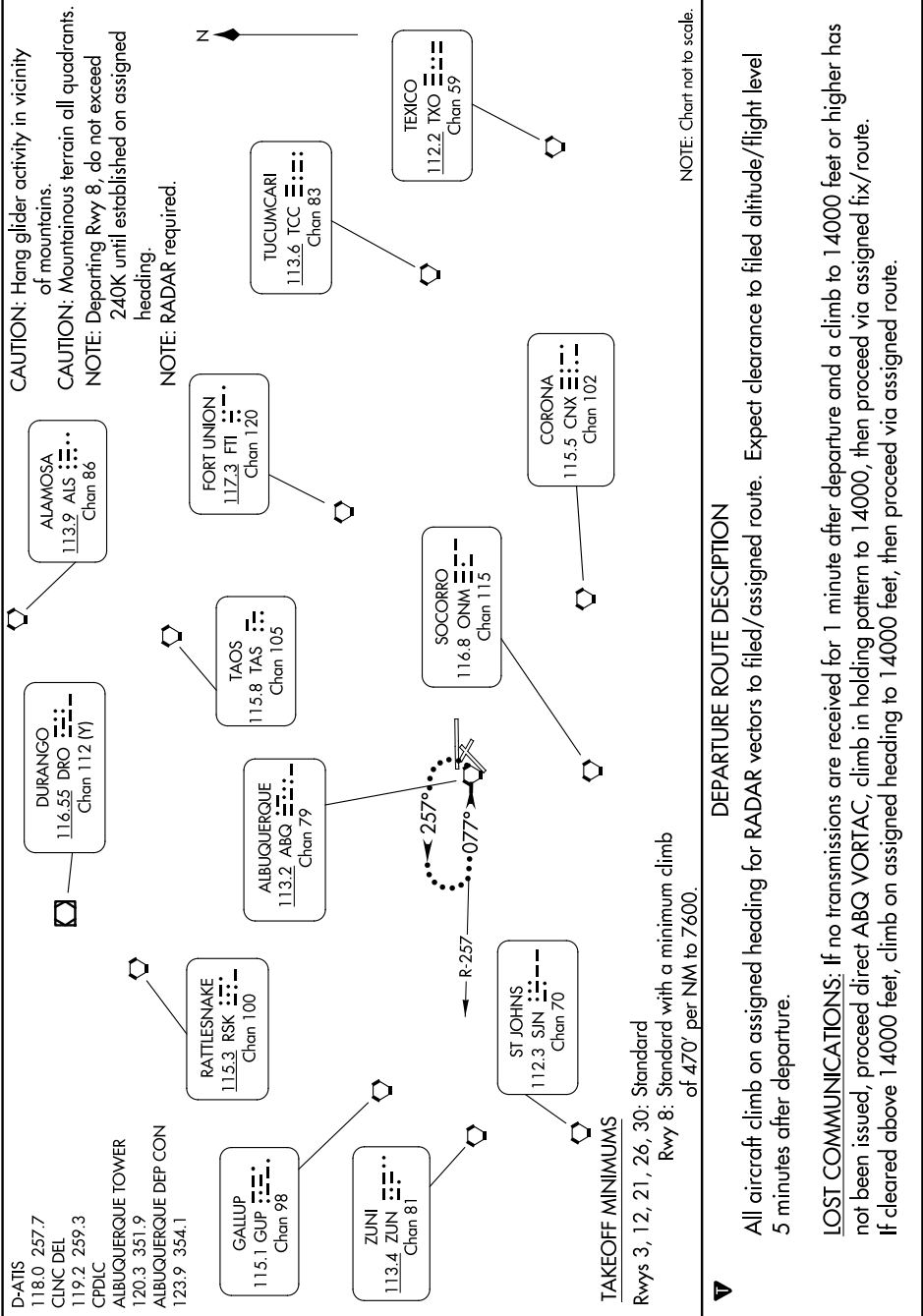


# ALBUQUERQUE THREE DEPARTURE

SW-1, 16 APR 2026 to 14 MAY 2026



**CAUTION:** Hang glider activity in vicinity of mountains.  
**CAUTION:** Mountainous terrain all quadrants.  
**NOTE:** Departing Rwy 8, do not exceed 240K until established on assigned heading.  
**NOTE:** RADAR required.

**TAKEOFF MINIMUMS**  
 Rwys 3, 12, 21, 26, 30: Standard  
 Rwy 8: Standard with a minimum climb of 470' per NM to 7600.

**DEPARTURE ROUTE DESCRIPTION**  
 All aircraft climb on assigned heading for RADAR vectors to filed/assigned route. Expect clearance to filed altitude/flight level 5 minutes after departure.  
**LOST COMMUNICATIONS:** If no transmissions are received for 1 minute after departure and a climb to 14000 feet or higher has not been issued, proceed direct ABQ VORTAC, climb in holding pattern to 14000, then proceed via assigned fix/route. If cleared above 14000 feet, climb on assigned heading to 14000 feet, then proceed via assigned route.

**NOTE:** Chart not to scale.

SW-1, 16 APR 2026 to 14 MAY 2026