

HI-TACAN RWY 8

VORTAC ABQ 113.2 Chan 79	APCH CRS 077°	Rwy Idg 12,793 TDZE 5320 Arprt Elev 5355
--------------------------------	------------------	---------------------------------------------------------

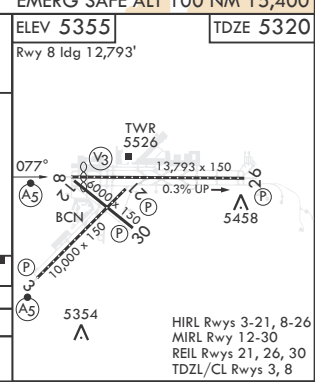
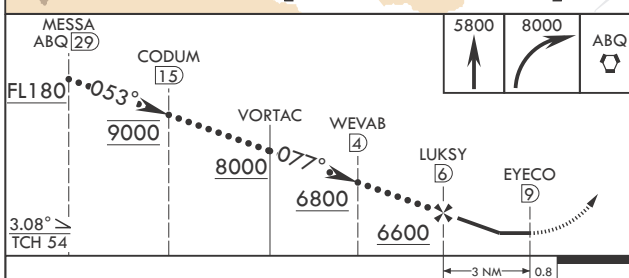
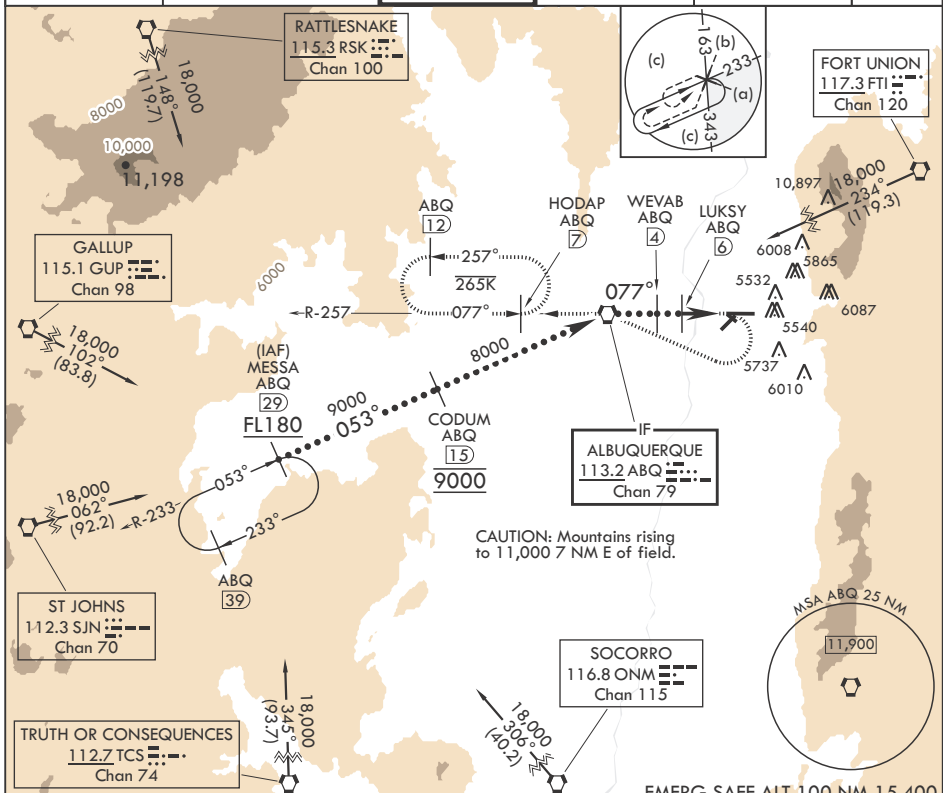
(USAF)

ALBUQUERQUE INTL SUNPORT (KIRTLAND AFB) (KABQ)

⚠ When ALS inop, increase CAT CDE RVR to 55, vis to 1 1/8 miles.
 ** Circling NA for CAT E SE of Rwy 3-21 and NE of Rwy 12-30. When local altimeter is not received, procedure NA.

MALSR MISSED APPROACH: Climb to 5800 then climbing right turn to 8000 direct ABQ
 VORTAC R-257 to HODAP/ABQ 7 DME and hold.

D-ATIS 118.0 257.7	APP CON/DEP CON 123.9 253.5	TOWER 120.3 351.9	GND CON 121.9 348.6	CLNC DEL 119.2 259.3	ASR
-----------------------	--------------------------------	----------------------	------------------------	-------------------------	-----



CATEGORY	C	D	E
S-8*	5700/35	380	(400-%)
Ⓢ CIRCLING**	5920-1½ 565 (600-1½)	6460-3	1105 (1200-3)

ALBUQUERQUE, NEW MEXICO 35°02'N - 106°36'W ALBUQUERQUE INTL SUNPORT (KIRTLAND AFB) (KABQ)

Amdt 2A 29MAR18

HI-TACAN RWY 8

SW-1, 16 APR 2026 to 14 MAY 2026

SW-1, 16 APR 2026 to 14 MAY 2026