


LOC/DME I-SPT 111.9 Chan 56	APP CRS 079°	Rwy Ldg 12793 TDZE 5320 Apt Elev 5355
---	------------------------	--

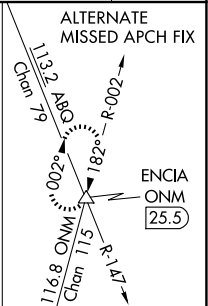
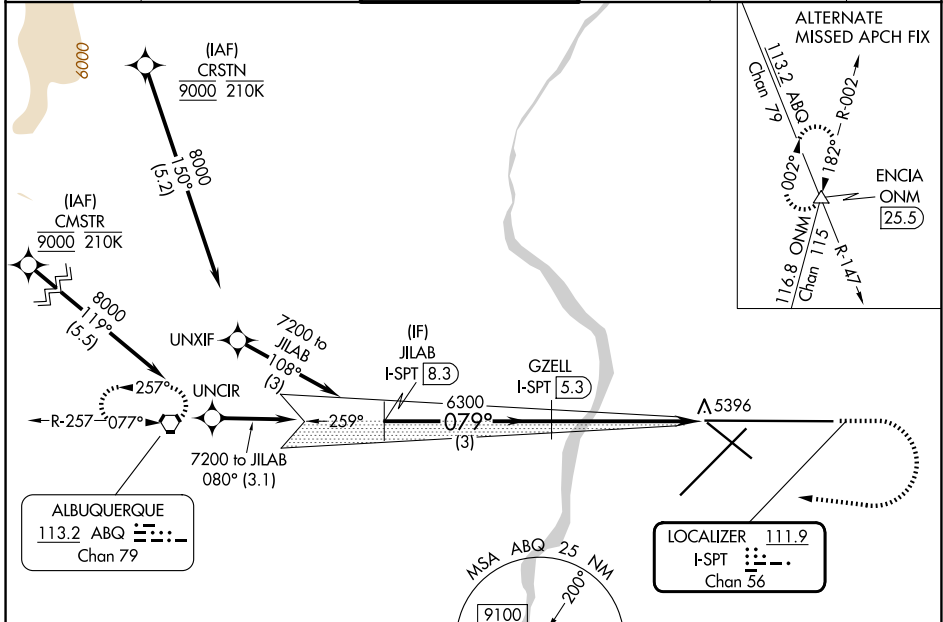
ILS or LOC RWY 8

ALBUQUERQUE INTL SUNPORT (ABQ)

DME required. RNAV 1 - GPS or RADAR required for procedure entry.
 For inop ALS, increase S-LOC 8 Cat C and D visibility to RVR 6000.
 ASR

MALSR

 MISSED APPROACH: Climb to 8000 then climbing right turn to 8000 direct ABQ VORTAC and hold.

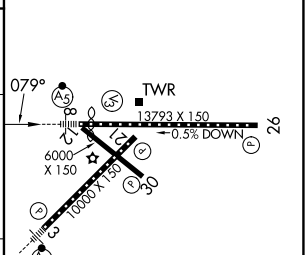
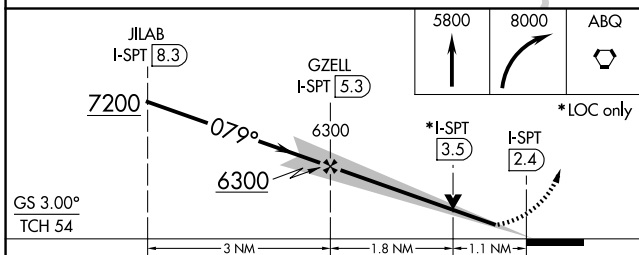
D-ATIS 118.0 257.7	ALBUQUERQUE APP CON 123.9 354.1	ALBUQUERQUE TOWER 120.3 351.9	GND CON 121.9 348.6	CLNC DEL 119.2 259.3	CPDLC
------------------------------	---	---	-------------------------------	--------------------------------	-------



SW-1, 16 APR 2026 to 14 MAY 2026

SW-1, 16 APR 2026 to 14 MAY 2026

ALBUQUERQUE 113.2 ABQ Chan 79	LOCALIZER 111.9 I-SPT Chan 56	ELEV 5355	TDZE 5320
--	---	-----------	-----------



CATEGORY	A	B	C	D
S-ILS 8	5527/18		207 (200-½)	
S-LOC 8	5720/24	400 (400-½)	5720/40	400 (400-¾)
CIRCLING	5840-1 485 (500-1)	5920-1 565 (600-1)	5940-1½ 585 (600-1½)	NA

MIRL Rwy 12-30 TDZ/CL Rwys 3 and 8 HIRL Rwys 3-21 and 8-26 REIL Rwys 21, 26, and 30					
FAF to MAP 2.9 NM					
Knots	60	90	120	150	180
Min:Sec	2:54	1:56	1:27	1:10	0:58