

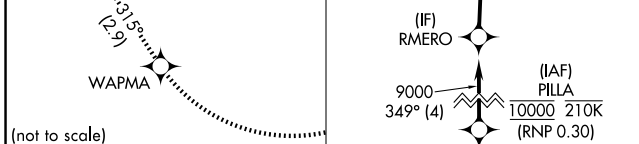
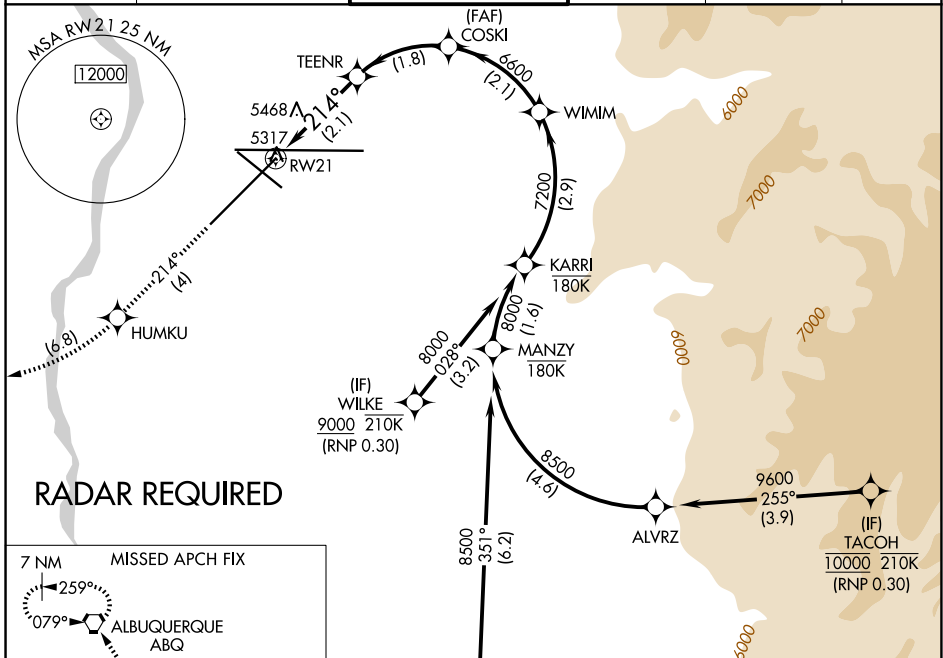
APP CRS	Rwy Ldg	10000
214°	TDZE	5316
	Apt Elev	5355

RNAV (RNP) Z RWY 21

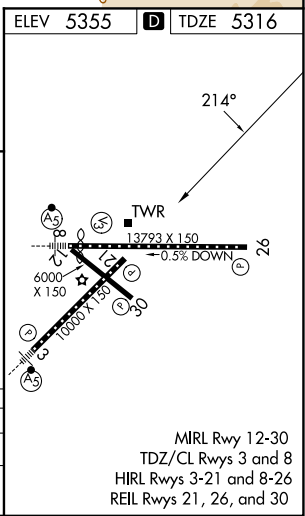
ALBUQUERQUE INTL SUNPORT (ABQ)

ASR	For uncompensated Baro-VNAV systems, procedure NA below -12°C (11°F) or above 47°C (116°F). RF required. GPS required.	MISSED APPROACH: Climb to 8000 on track 214° to HUMKU, right turn to WAPMA, then on track 315° to ABQ VORTAC and hold.

D-ATIS	ALBUQUERQUE APP CON	ALBUQUERQUE TOWER	GND CON	CLNC DEL	CPDLC
118.0 257.7	123.9 354.1	120.3 351.9	121.9 348.6	119.2 259.3	



8000	HUMKU	WAPMA	ABQ	See planview for multiple IF locations.
tr 214°			tr 315°	
WIMM KARRI				
8000				
RW21 TEENR COSKI WIMM KARRI				
2.1 NM 1.8 NM 2.1 NM 2.9 NM				
CATEGORY A B C D				
RNP 0.30 DA 5755-1½ 439 (400-1½)				



SW-1, 16 APR 2026 to 14 MAY 2026

SW-1, 16 APR 2026 to 14 MAY 2026