

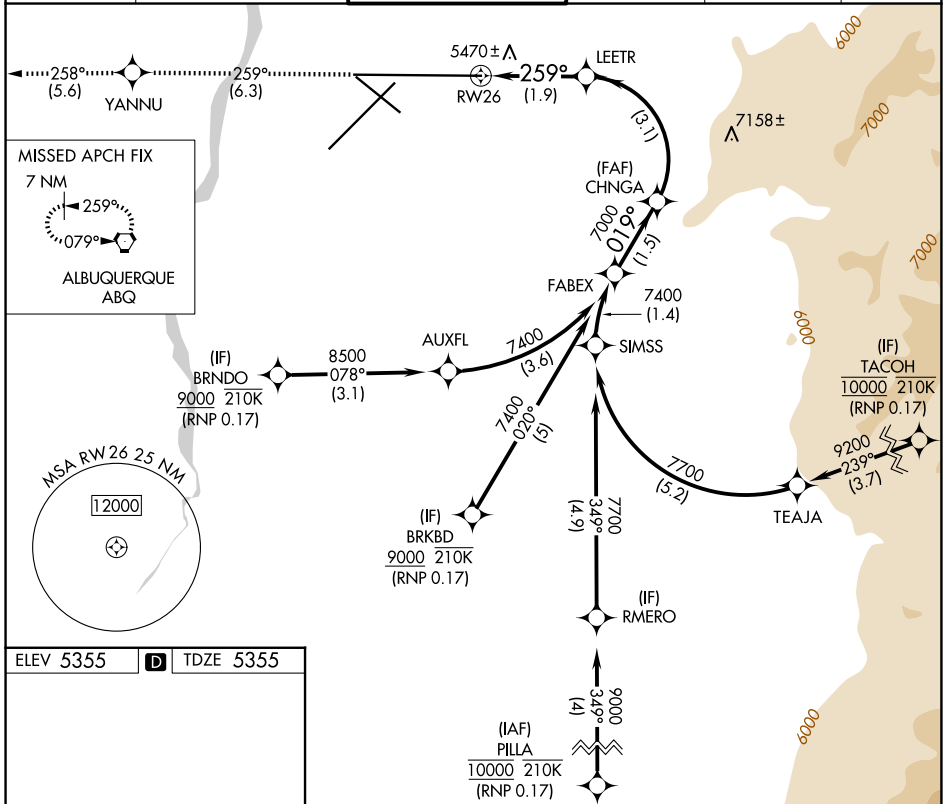
APP CRS 259°	Rwy Ldg TDZE Apt Elev	13793 5355 5355
------------------------	-----------------------------	--

RNAV (RNP) Z RWY 26

ALBUQUERQUE INTL SUNPORT (ABQ)

RNP AR APCH, RF required.	MISSED APPROACH: Climb to 8000 on track 259° to YANNU and on track 258° to ABQ VORTAC and hold.
▼ For uncompensated Baro-VNAV systems, procedure NA ASR below -13°C or above 48°C.	

D-ATIS 118.0 257.7	ALBUQUERQUE APP CON 123.9 354.1	ALBUQUERQUE TOWER 120.3 351.9	GND CON 121.9 348.6	CLNC DEL 119.2 259.3	CPDLC
------------------------------	---	---	-------------------------------	--------------------------------	-------



ELEV 5355 **D** TDZE 5355

MIRL Rwy 12-30
TDZ/CL Rlys 3 and 8
HIRL Rlys 3-21 and 8-26
REIL Rlys 21, 26, and 30

8000	YANNU	ABQ	VGSI and RNAV glidepath not coincident (VGSI Angle 3.00/TCH 83).
tr 259°	tr 258°		FABEX
See planview for multiple IF locations.			CHNGA
	LEETR	7000	7400
		019°	7000
			GP 3.00° TCH 50
	1.9 NM	3.1 NM	1.5 NM

CATEGORY	A	B	C	D
RNP 0.17 DA	5745-1¼ 390 (400-1¼)			

AUTHORIZATION REQUIRED

SW-1, 16 APR 2026 to 14 MAY 2026

SW-1, 16 APR 2026 to 14 MAY 2026