

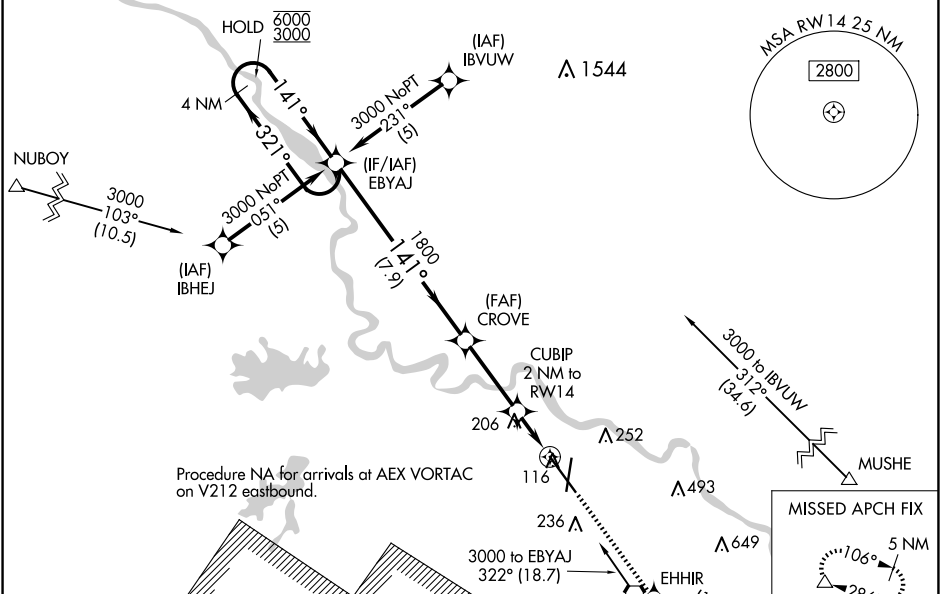
WAAS CH 56417 W14A	APP CRS 141°	Rwy Ldg 9352 TDZE 85 Apr Elev 88
--	------------------------	---

RNAV (GPS) RWY 14

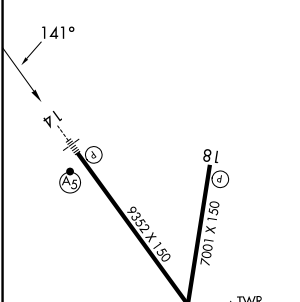
ALEXANDRIA INTL (AEX)

RNP APCH - GPS	MALSR 	MISSED APPROACH: Climb to 4000 direct EHHIR and on track 106° to MUSHE and hold.
<p>⚠ For uncompensated Baro-VNAV systems, LNAV/VNAV NA below -15°C or above 48°C. For inop ALS increase LNAV Cat D visibility to RVR 6000. RADAR required when R-3801 A-B in use.</p>		

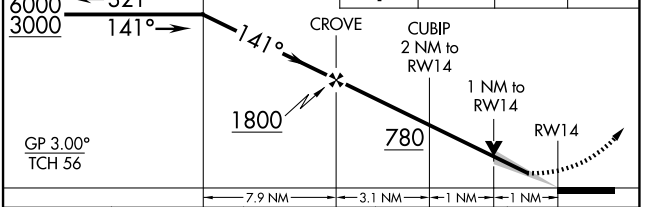
ASOS 123.975	POLK APP CON 125.4 254.8	ALEXANDRIA TOWER 127.35 (CTAF) 269.2	GND CON 121.9 372.0	CLNC DEL 121.9
------------------------	------------------------------------	---	-------------------------------	--------------------------



ELEV 88	D	TDZE 85
---------	----------	---------



VGSI and RNAV glidepath not coincident (VGSI Angle 3.00/TCH 71). 4 NM Holding Pattern EBYAJ	4000	EHHIR	tr 106°	MUSHE
--	------	-------	---------	-------



CATEGORY	A	B	C	D
LPV DA		346/24	261 (300-1/2)	
LNAV/VNAV DA		488/50	403 (400-1)	
LNAV MDA		480/24	395 (400-1/2)	480/50 395 (400-1)
C CIRCLING	540-1 452 (500-1)	560-1 472 (500-1)	700-1 3/4 612 (700-1 3/4)	860-2 1/2 772 (800-2 1/2)

TDZL Rwy 14
REIL Rws 18, 32 and 36
HIRL Rws 18-36 and 14-32

SC-4, 16 APR 2026 to 14 MAY 2026

SC-4, 16 APR 2026 to 14 MAY 2026