

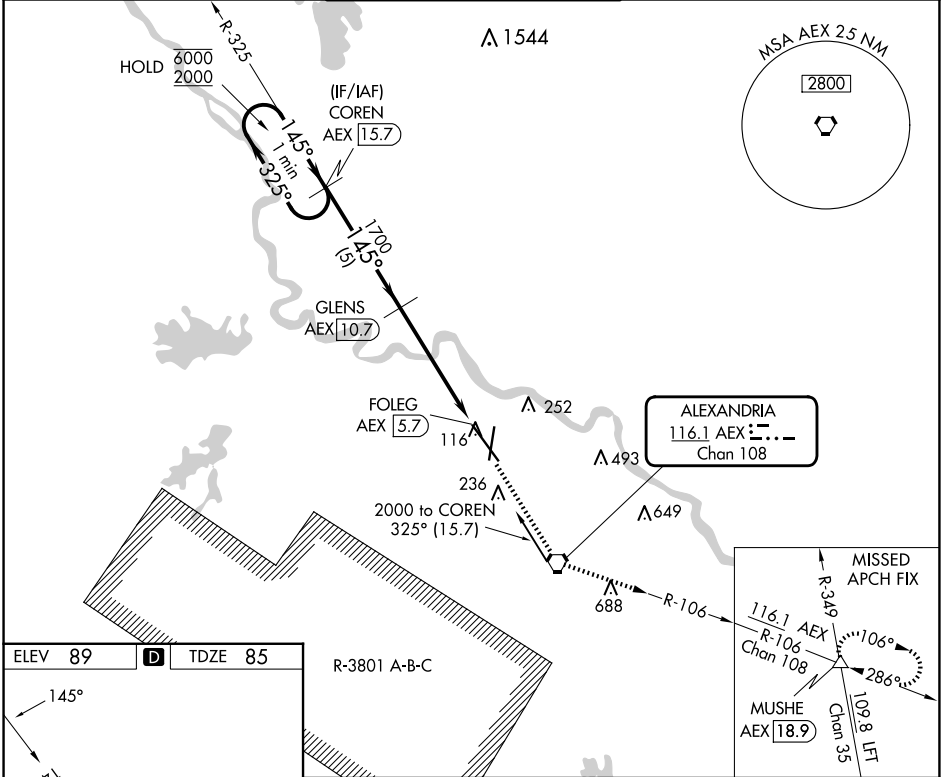
VORTAC AEX <b>116.1</b> Chan <b>108</b>	APP CRS <b>145°</b>	Rwy Ldg TDZE Apt Elev <b>9352</b> <b>85</b> <b>89</b>
---	------------------------	--

# VOR RWY 14

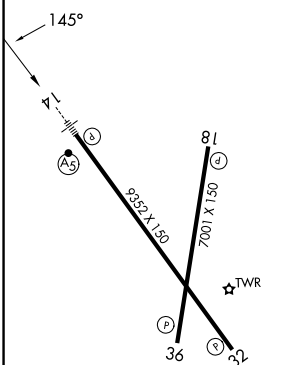
ALEXANDRIA INTL (AEX)

DME required.	MALS R	MISSED APPROACH: Climb to 4000 direct AEX VORTAC, then on AEX VORTAC R-106 to MUSHE INT and hold.
<p>▼ When R-3801B active, RADAR required.</p> <p>▲ Rwy 14 helicopter visibility reduction below ¾ SM NA.</p>		

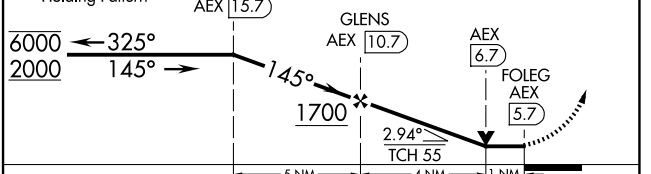
ASOS <b>123.975</b>	POLK APP CON <b>125.4 254.8</b>	ALEXANDRIA TOWER <b>127.35 (CTAF) 269.2</b>	GND CON <b>121.9 372.0</b>	CLNC DEL <b>121.9</b>
------------------------	------------------------------------	--	-------------------------------	--------------------------



ELEV 89	<b>D</b>	TDZE 85
---------	----------	---------



VGSI and descent angles not coincident (VGSI Angle 3.00/TCH 71).	4000	AEX	AEX R-106	MUSHE
One Minute Holding Pattern	COREN AEX 15.7			



CATEGORY	A	B	C	D
S-14	500/40	415 (500-¾)		500/55 415 (500-1)
CIRCLING	540-1 451 (500-1)	560-1 471 (500-1)	700-1¾ 611 (700-1¾)	860-2½ 771 (800-2½)

TDZL Rwy 14  
REIL Rws 18, 32 and 36  
HIRL Rws 18-36 and 14-32

SC-4, 16 APR 2026 to 14 MAY 2026

SC-4, 16 APR 2026 to 14 MAY 2026