

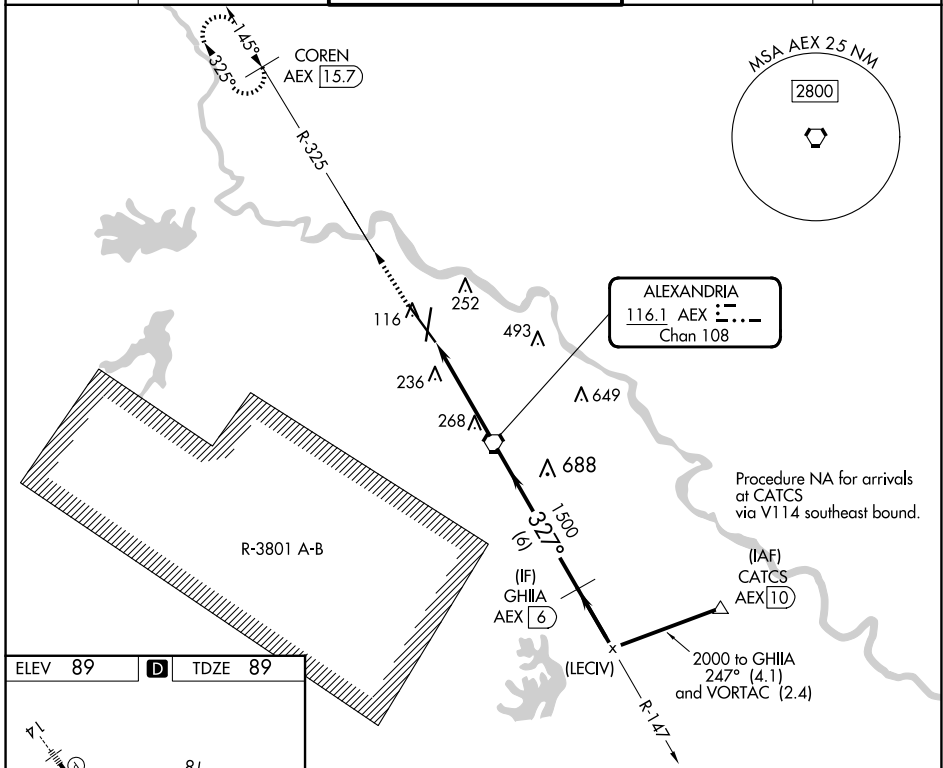
VORTAC AEX 116.1 Chan 108	APP CRS 327°	Rwy Ldg TDZE 89 Apt Elev 89	9352
---	------------------------	---	-------------

VOR/DME RWY 32

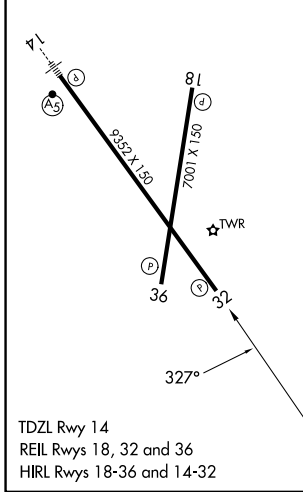
ALEXANDRIA INTL (AEX)

▼ RADAR required when R-3801 A-B in use.
▲ Rwy 32 helicopter visibility reduction below 3/4 SM NA.
 MISSED APPROACH: Climb to 3000 via AEX R-325 to COREN/AEX 15.7 DME and hold.

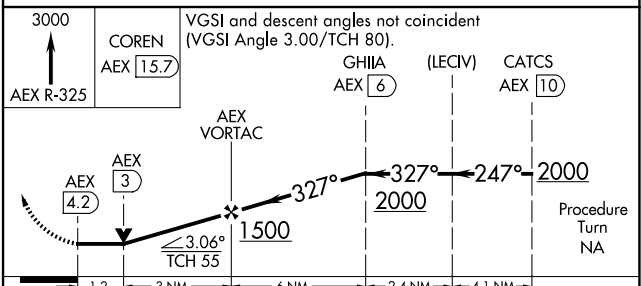
ASOS 123.975	POLK APP CON 125.4 254.8	ALEXANDRIA TOWER 127.35 (CTAF) 269.2	GND CON 121.9 372.0	CLNC DEL 121.9
------------------------	------------------------------------	--	-------------------------------	--------------------------



ELEV 89	D	TDZE 89
---------	----------	---------



TDZL Rwy 14
 REIL Rws 18, 32 and 36
 HIRL Rws 18-36 and 14-32



CATEGORY	A	B	C	D
S-32	520/55	431 (500-1)	520-1¼ 431 (500-1¼)	520-1½ 431 (500-1½)
CIRCLING	540-1 451 (500-1)	560-1 471 (500-1)	700-1¾ 611 (700-1¾)	860-2½ 771 (800-2½)

SC-4, 16 APR 2026 to 14 MAY 2026

SC-4, 16 APR 2026 to 14 MAY 2026