

LOC I-ABE 110.7	APP CRS 063°	Rwy Ldg TDZE Apt Elev	7599 394 394
---------------------------	------------------------	-----------------------------	---

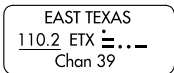
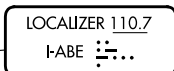
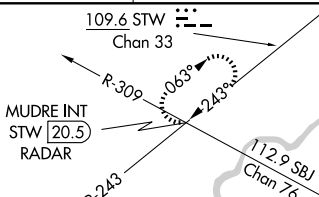
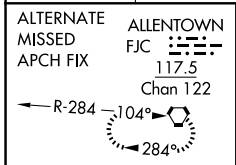
ILS RWY 6 (SA CAT I & II)

LEHIGH VALLEY INTL (ABE)

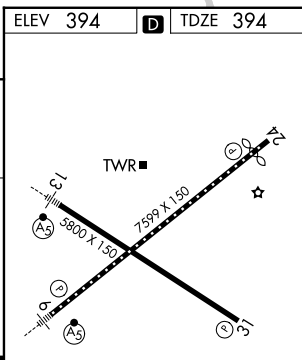
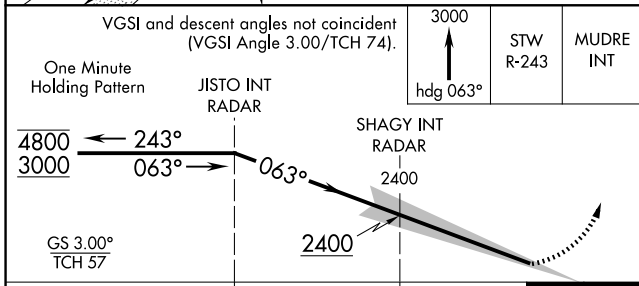
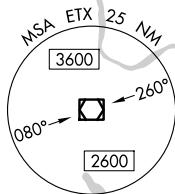
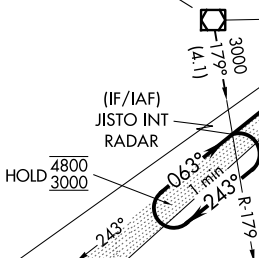
SA CAT I: Requires specific OPSPEC, MSPEC, or LOA approval and use of HUD to DH. **SA CAT II:** Reduced lighting: Requires specific OPSPEC, MSPEC, or LOA approval and use of autoland or HUD to touchdown.

MALS R MISSED APPROACH: Climb to 3000 on heading 063° and STW R-243 to MUDRE INT/STW 20.5 DME/RADAR and hold.

ATIS 126.975	ALLENTOWN APP CON 119.65 124.45 351.8	ALLENTOWN TOWER 120.5 257.95	GND CON 121.9 257.95	CLNC DEL 124.05 257.95
------------------------	---	--	--------------------------------	----------------------------------



SHAGY INT
RADAR



CATEGORY	A	B	C	D
S-ILS 6	SA CAT I	RA 154/14	150 DA 544	
S-ILS 6	SA CAT II	RA 114/12	100 DA 494	

SA CATEGORY I & II ILS - SPECIAL AIRCREW & AIRCRAFT CERTIFICATION REQUIRED

REIL Rwy 24 and 31
HIRL Rwy 6-24 and 13-31

NE-4, 16 APR 2026 to 14 MAY 2026

NE-4, 16 APR 2026 to 14 MAY 2026