

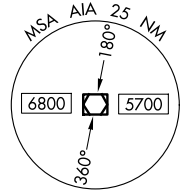
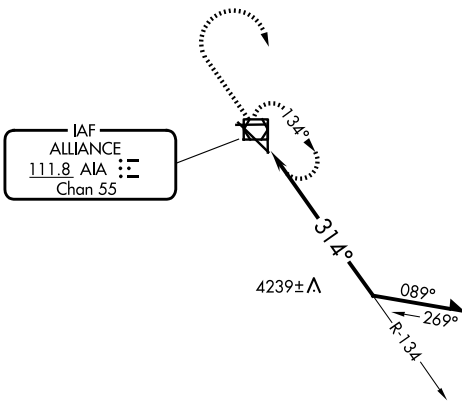
VOR/DME AIA <b>111.8</b> Chan <b>55</b>	APP CRS <b>314°</b>	Rwy Ldg <b>9203</b> TDZE <b>3927</b> Apt Elev <b>3931</b>
---	------------------------	---

# VOR RWY 30

ALLIANCE MUNI (AIA)

<b>▲</b> For inop ALS, increase S-30 Cats A/B visibility to 1 SM and S-30 Cats C/D visibility to 1 1/4 SM.	<b>MALS</b> 	<b>MISSED APPROACH:</b> Climb to 5700 then right turn direct AIA VOR/DME and hold.

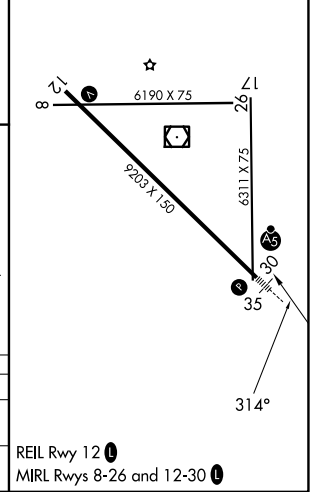
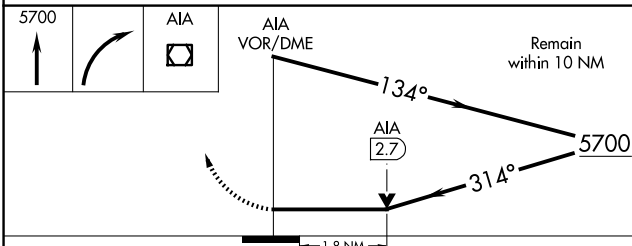
ASOS <b>135.075</b>	DENVER CENTER <b>127.95 338.2</b>	UNICOM <b>123.0 (CTAF) 1</b>
------------------------	--------------------------------------	---------------------------------



NC-2, 16 APR 2026 to 14 MAY 2026

NC-2, 16 APR 2026 to 14 MAY 2026

ELEV 3931	<b>D</b>	TDZE 3927
-----------	----------	-----------



CATEGORY	A	B	C	D
S-30	4540-3/4 613 (700-3/4)		4540-1 1/8 613 (700-1 1/8)	4540-1 1/2 613 (700-1 1/2)
CIRCLING	4540-1 609 (700-1)		4580-1 3/4 649 (700-1 3/4)	4640-2 1/4 709 (800-2 1/4)