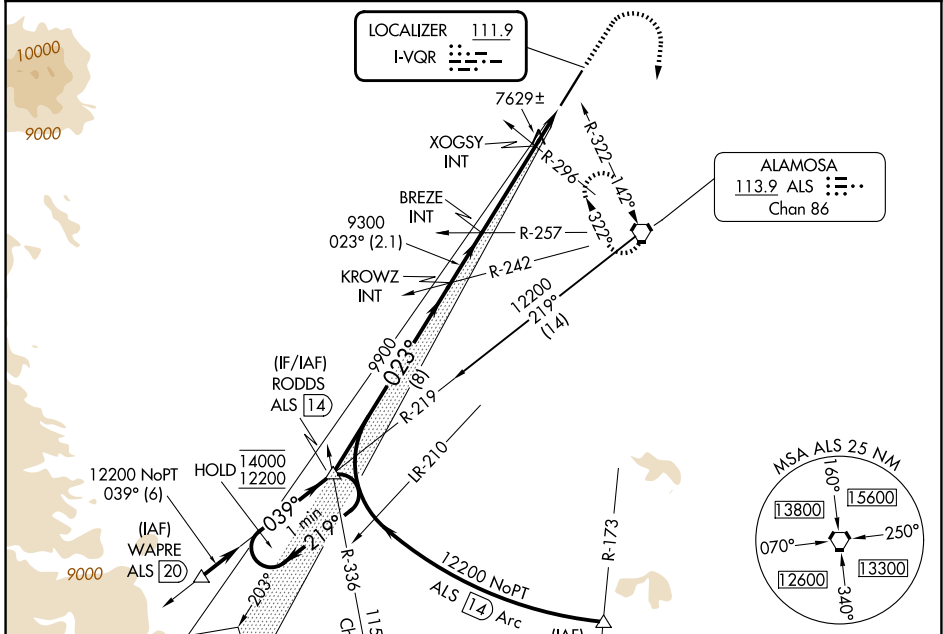


LOC I-VQR <b>111.9</b>	APP CRS <b>023°</b>	Rwy Ldg TDZE Apt Elev	<b>8519</b> <b>7540</b> <b>7540</b>
---------------------------	------------------------	-----------------------------	---

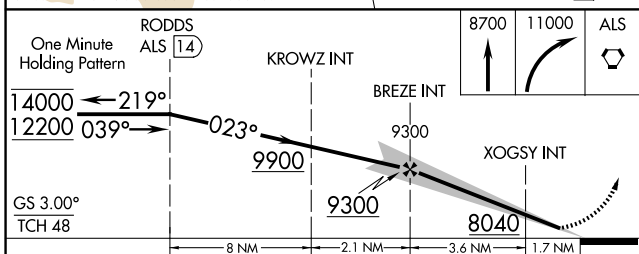
**ILS or LOC RWY 2**  
SAN LUIS VALLEY RGNL/BERGMAN FLD (ALS)

<p><b>NA</b> For inop ALS, increase S-LOC 2 Cats C/D visibility to 1 3/8 SM.</p> <p><b>-25°C</b></p>	<p><b>MALSR</b></p>	<p><b>MISSED APPROACH:</b> Climb to 8700 then climbing right turn to 11000 direct ALS VORTAC and hold, continue climb in hold to 11000.</p>
--	---------------------	---

<b>ASOS</b> <b>135.175</b>	<b>DENVER CENTER</b> <b>128.375 379.95</b>	<b>UNICOM</b> <b>122.8 (CTAF)</b>
-------------------------------	---	--------------------------------------

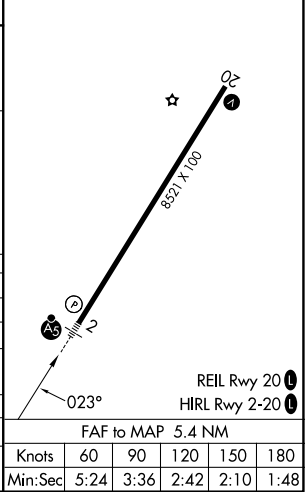


Procedure NA for arrivals at WAPRE on V368 southwest bound.



CATEGORY	A	B	C	D
S-ILS 2	7740-1/2 200 (200-1/2)			
S-LOC 2	8040-1/2 500 (500-1/2)	8040-1 500 (500-1)		
CIRCLING	8040-1 500 (500-1)	8080-1 1/2 540 (600-1 1/2)		8100-2 560 (600-2)
XOGSY FIX MINIMUMS (DUAL VOR RECEIVERS REQUIRED)				
S-LOC 2	7880-1/2 340 (400-1/2)			
CIRCLING	8040-1 500 (500-1)	8080-1 1/2 540 (600-1 1/2)	8100-2 560 (600-2)	

ELEV 7540	<b>D</b> TDZE 7540
-----------	--------------------



SW-1, 16 APR 2026 to 14 MAY 2026

SW-1, 16 APR 2026 to 14 MAY 2026