

APP CRS 218°	Rwy Ldg TDZE Apt Elev	13502 3606 3607
------------------------	-----------------------------	--

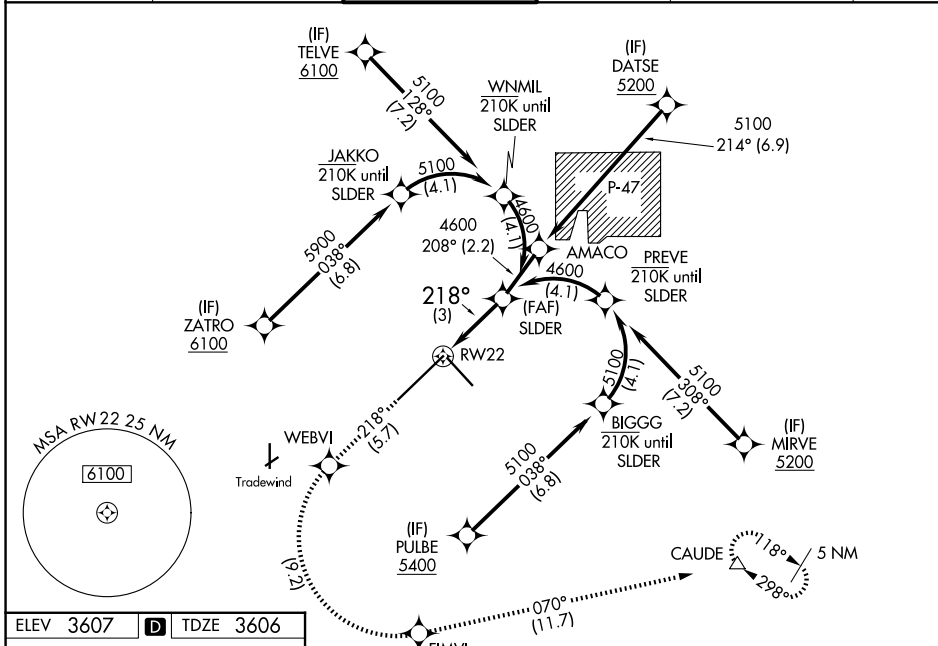
RNAV (RNP) Z RWY 22

RICK HUSBAND AMARILLO INTL (AMA)

ASR For uncompensated Baro-VNAV systems, procedure NA below -14°C (7°F) or above 52°C (125°F). RF required. GPS required. For inop ALS, increase RNP 0.14 all Cats visibility to 3/8 SM and increase RNP 0.30 all Cats visibility to 1/8 SM.

MALSR MISSED APPROACH: (Do not exceed 185 K until FIMVI) Climb to 5400 on track 218° to WEBVI, left turn to FIMVI, then track 070° to CAUDE and hold.

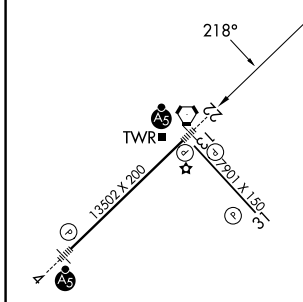
ATIS 118.85 350.3	AMARILLO APP CON* 119.5 307.0	AMARILLO TOWER* 118.3(CTAF) 257.9	GND CON 121.9 348.6	CLNC DEL 121.65 239.275	UNICOM 122.95
-----------------------------	---	---	-------------------------------	-----------------------------------	-------------------------



SC-2, 16 APR 2026 to 14 MAY 2026

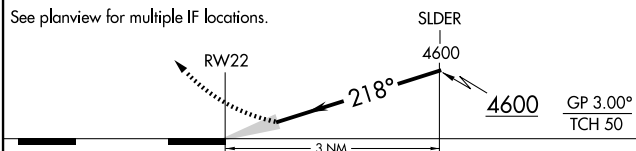
SC-2, 16 APR 2026 to 14 MAY 2026

ELEV 3607	D	TDZE 3606
-----------	----------	-----------



RNAV 1 - GPS or RADAR REQUIRED

VGSI and RNAV glidepath not coincident (VGSI Angle 3.00/TCH 77).	5400	WEBVI	FIMVI	CAUDE
	tr 218°		tr 070°	△



CATEGORY	A	B	C	D
RNP 0.14 DA		3884-1/2	278 (300-1/2)	
RNP 0.30 DA		3958-3/4	352 (400-3/4)	

AUTHORIZATION REQUIRED